

Tank, Horizontal Jacketed

Design

- ☐ STHGJ Carbon Steel, Glass Lined
Five-Year Tank Limited Warranty
- ☐ STHDJ Carbon Steel, Double-Glass Lined
Ten-Year Tank Limited Warranty
- ☐ STHEJ Carbon Steel, Epoxy Lining
One-Year Tank Limited Warranty
- ☐ STH2J Duplex Stainless Steel
Twenty-Five-Year* Tank Limited Warranty
*See warranty sheet for details
- ☐ STH3J 316L Stainless Steel
Ten-Year Tank Limited Warranty

STHGJ30063

STH2J30063

STHDJ30063

STH3J30063

STHEJ30063



Date:

Project #:

Engineer:

Prepared By:

Bid Date:

Submittal Data

Project Name:

Location:

Contractor:

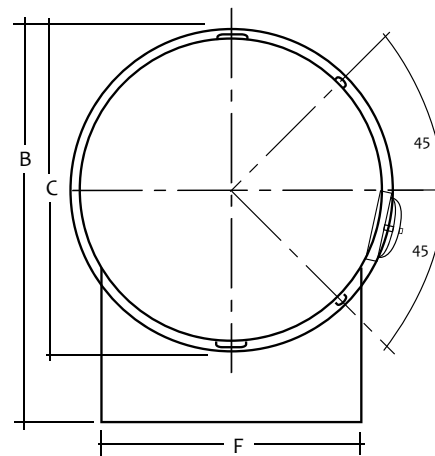
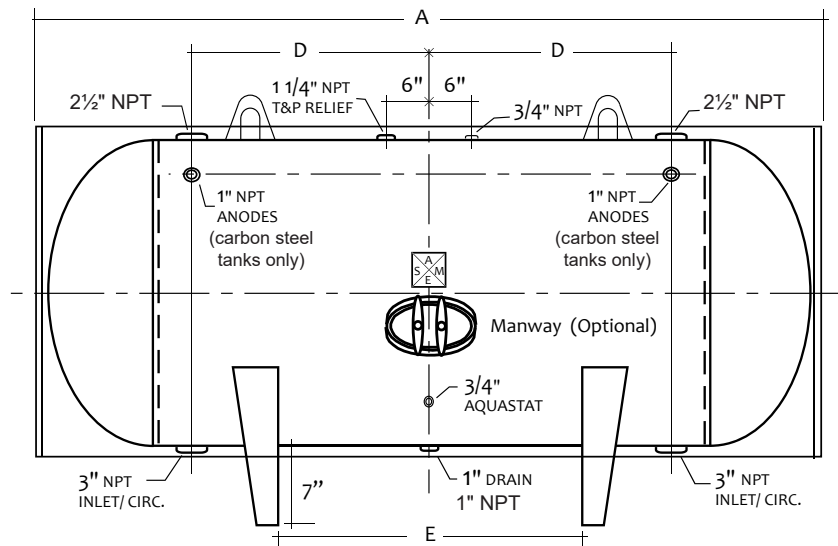
Code	ASME Sec IV HLW
Design Pressure	125 psi
Parts Warranty	One Year, Limited
Exterior	Heavy Ga. Steel Jacket
Insulation	2" High Density Foam w/12.5 R-Value
Supports	Saddles
Capacity	175 Gallons
Nominal Capacity	193 Gallons
Weight	570 Lbs.

Dimensions

Callout	Value	Description
A	67"	Overall Length
B	41"	Overall Height
C	34"	Diameter
D	18"	Circulation
E	18"	Supports
F	26.4"	Support Width

Options

- ☐ 150 PSI Vessel
- ☐ Hand Hole
- ☐ Optional Fittings / Additional Notes:



Customer Service and Product Support: 800.900.9276 • Fax 800.559.1583
 Headquarters: 20 Industrial Way, Rochester, NH, USA 03867 • 603.335.6300 • Fax 603.335.3355
 9 Brigden Gate, Halton Hills, Ontario, Canada L7G 0A3 • 905.203.0600 • Fax 905.636.0666
www.Laars.com Litho in U.S.A. © Laars Heating Systems 20-09 Document 4224F

Tank, Horizontal Jacketed

Design

- ☐ STHGJ Carbon Steel, Glass Lined
Five-Year Tank Limited Warranty
- ☐ STHDJ Carbon Steel, Double-Glass Lined
Ten-Year Tank Limited Warranty
- ☐ STHEJ Carbon Steel, Epoxy Lining
One-Year Tank Limited Warranty
- ☐ STH2J Duplex Stainless Steel
Twenty-Five-Year* Tank Limited Warranty
*See warranty sheet for details
- ☐ STH3J 316L Stainless Steel
Ten-Year Tank Limited Warranty

STHGJ30075
STHDJ30075
STHEJ30075

STH2J30075
STH3J30075



Submittal Data

Date:

Project #:

Engineer:

Prepared By:

Bid Date:

Project Name:

Location:

Contractor:

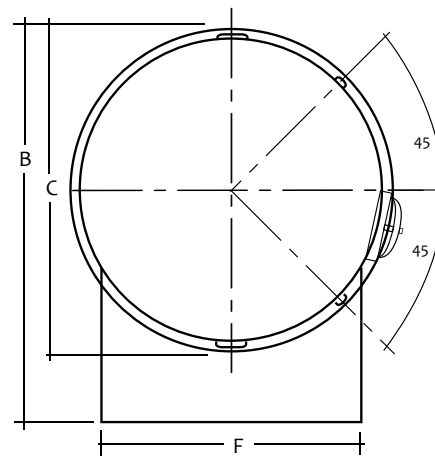
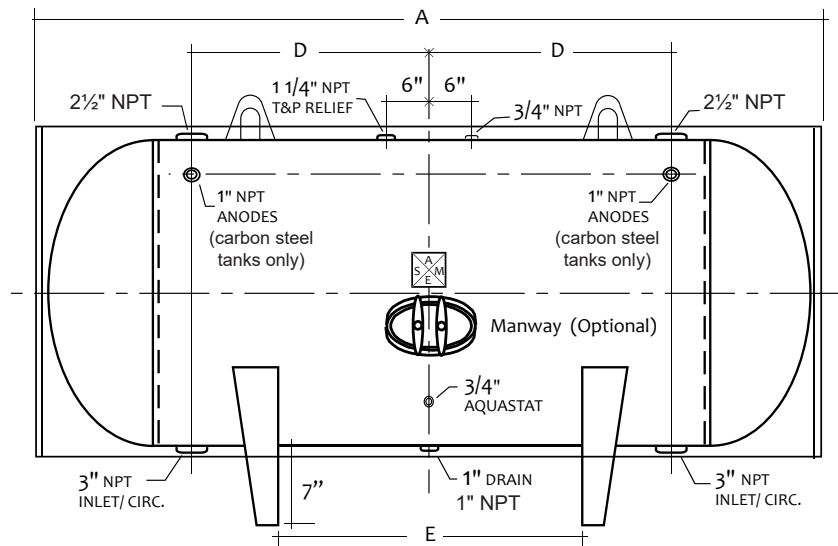
Code	ASME Sec IV HLW
Design Pressure	125 psi
Parts Warranty	One Year, Limited
Exterior	Heavy Ga. Steel Jacket
Insulation	2" High Density Foam w/12.5 R-Value
Supports	Saddles
Capacity	210 Gallons
Nominal Capacity	229 Gallons
Weight	622 Lbs.

Dimensions

Callout	Value	Description
A	79"	Overall Length
B	41"	Overall Height
C	34"	Diameter
D	24"	Circulation
E	24"	Supports
F	26.4"	Support Width

Options

- ☐ 150 PSI Vessel
- ☐ Hand Hole
- ☐ Optional Fittings / Additional Notes:



Customer Service and Product Support: 800.900.9276 • Fax 800.559.1583
Headquarters: 20 Industrial Way, Rochester, NH, USA 03867 • 603.335.6300 • Fax 603.335.3355
9 Brigden Gate, Halton Hills, Ontario, Canada L7G 0A3 • 905.203.0600 • Fax 905.636.0666
www.Laars.com Litho in U.S.A. © Laars Heating Systems 20-09 Document 4224F

Tank, Horizontal Jacketed

Design

- ☐ STHGJ Carbon Steel, Glass Lined
Five-Year Tank Limited Warranty
- ☐ STHDJ Carbon Steel, Double-Glass Lined
Ten-Year Tank Limited Warranty
- ☐ STHEJ Carbon Steel, Epoxy Lining
One-Year Tank Limited Warranty
- ☐ STH2J Duplex Stainless Steel
Twenty-Five-Year* Tank Limited Warranty
*See warranty sheet for details
- ☐ STH3J 316L Stainless Steel
Ten-Year Tank Limited Warranty

STHGJ30085
STHDJ30085
STHEJ30085

STH2J30085
STH3J30085



Submittal Data

Date:

Project #:

Engineer:

Prepared By:

Bid Date:

Project Name:

Location:

Contractor:

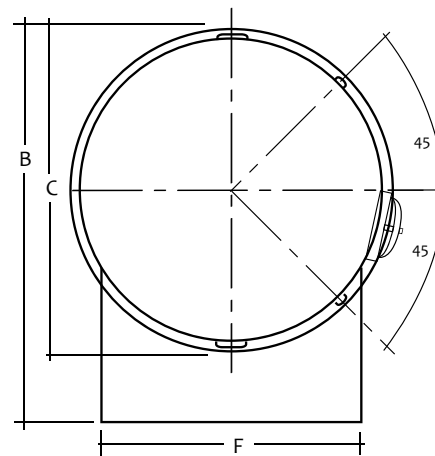
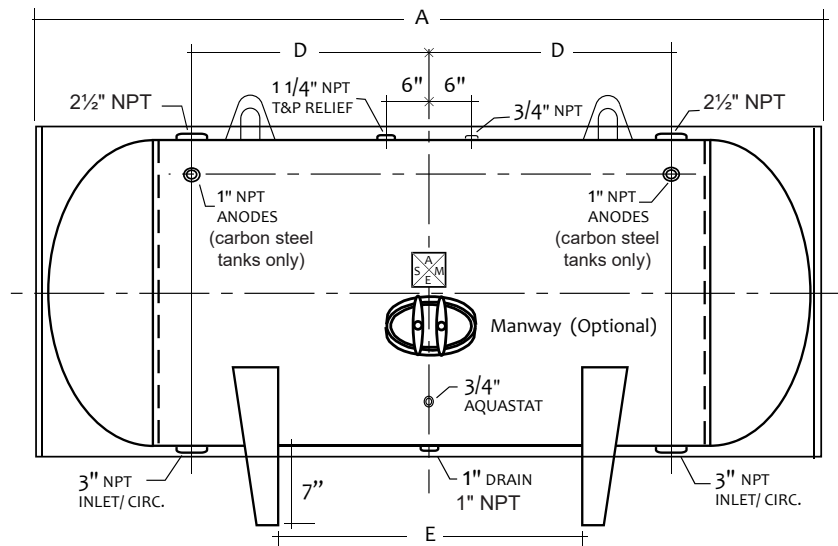
Code	ASME Sec IV HLW
Design Pressure	125 psi
Parts Warranty	One Year, Limited
Exterior	Heavy Ga. Steel Jacket
Insulation	2" High Density Foam w/12.5 R-Value
Supports	Saddles
Capacity	240 Gallons
Nominal Capacity	260 Gallons
Weight	755 Lbs.

Dimensions

Callout	Value	Description
A	89"	Overall Length
B	41"	Overall Height
C	34"	Diameter
D	29"	Circulation
E	34"	Supports
F	26.4"	Support Width

Options

- ☐ 150 PSI Vessel
- ☐ Hand Hole
- ☐ Optional Fittings / Additional Notes:



Customer Service and Product Support: 800.900.9276 • Fax 800.559.1583
Headquarters: 20 Industrial Way, Rochester, NH, USA 03867 • 603.335.6300 • Fax 603.335.3355
9 Brigden Gate, Halton Hills, Ontario, Canada L7G 0A3 • 905.203.0600 • Fax 905.636.0666
www.Laars.com
Litho in U.S.A. © Laars Heating Systems 20-09 Document 4224F

Tank, Horizontal Jacketed

Design

- ☐ STHGJ Carbon Steel, Glass Lined
Five-Year Tank Limited Warranty
- ☐ STHDJ Carbon Steel, Double-Glass Lined
Ten-Year Tank Limited Warranty
- ☐ STHEJ Carbon Steel, Epoxy Lining
One-Year Tank Limited Warranty
- ☐ STH2J Duplex Stainless Steel
Twenty-Five-Year* Tank Limited Warranty
*See warranty sheet for details
- ☐ STH3J 316L Stainless Steel
Ten-Year Tank Limited Warranty

STHGJ30099

STH2J30099

STHDJ30099

STH3J30099

STHEJ30099



Submittal Data

Date:

Project #:

Engineer:

Project Name:

Prepared By:

Location:

Bid Date:

Contractor:

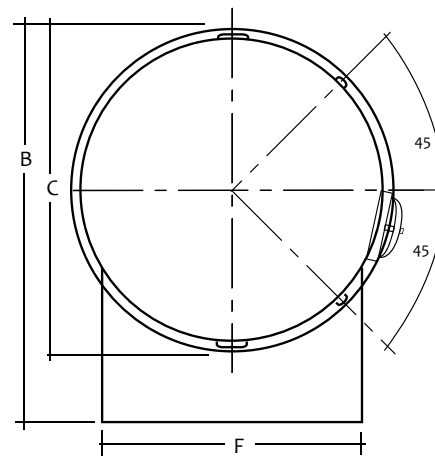
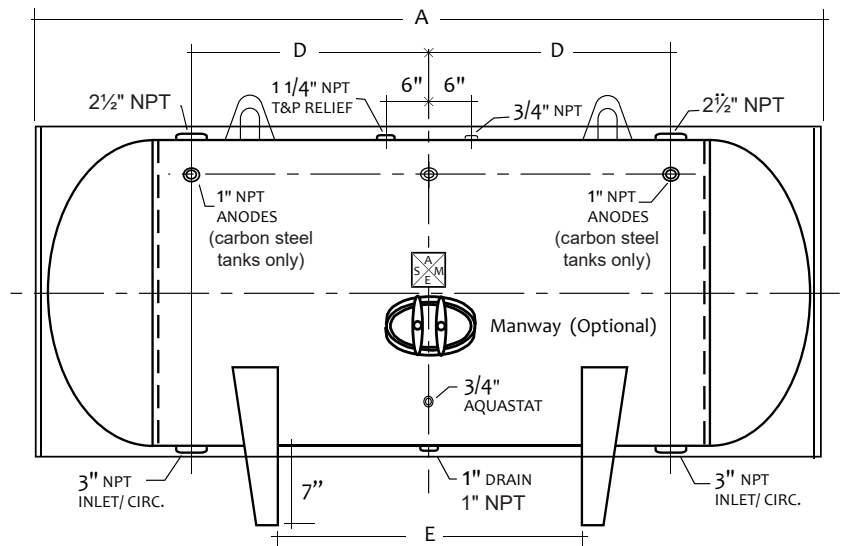
Code	ASME Sec IV HLW
Design Pressure	125 psi
Parts Warranty	One Year, Limited
Exterior	Heavy Ga. Steel Jacket
Insulation	2" High Density Foam w/12.5 R-Value
Supports	Saddles
Capacity	280 Gallons
Nominal Capacity	303 Gallons
Weight	728 Lbs.

Dimensions

Callout	Value	Description
A	103"	Overall Length
B	41"	Overall Height
C	34"	Diameter
D	36"	Circulation
E	48"	Supports
F	26.4"	Support Width

Options

- ☐ 150 PSI Vessel
- ☐ Hand Hole
- ☐ Optional Fittings / Additional Notes:



Customer Service and Product Support: 800.900.9276 • Fax 800.559.1583
 Headquarters: 20 Industrial Way, Rochester, NH, USA 03867 • 603.335.6300 • Fax 603.335.3355
 9 Brigden Gate, Halton Hills, Ontario, Canada L7G 0A3 • 905.203.0600 • Fax 905.636.0666
www.Laars.com Litho in U.S.A. © Laars Heating Systems 20-09 Document 4224F

Tank, Horizontal Jacketed

Design

- ☐ STHGJ Carbon Steel, Glass Lined
Five-Year Tank Limited Warranty
- ☐ STHDJ Carbon Steel, Double-Glass Lined
Ten-Year Tank Limited Warranty
- ☐ STHEJ Carbon Steel, Epoxy Lining
One-Year Tank Limited Warranty
- ☐ STH2J Duplex Stainless Steel
Twenty-Five-Year* Tank Limited Warranty
*See warranty sheet for details
- ☐ STH3J 316L Stainless Steel
Ten-Year Tank Limited Warranty

STHGJ30111

STH2J30111

STHDJ30111

STH3J30111

STHEJ30111



Submittal Data

Date:

Project #:

Engineer:

Project Name:

Prepared By:

Location:

Bid Date:

Contractor:

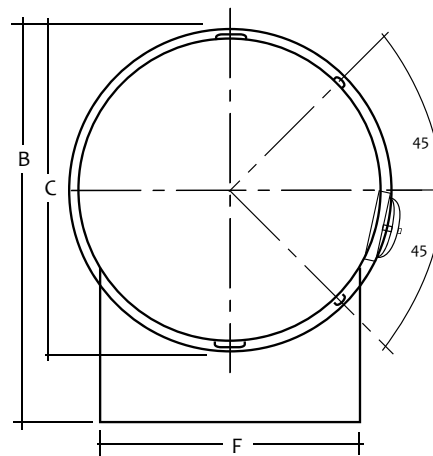
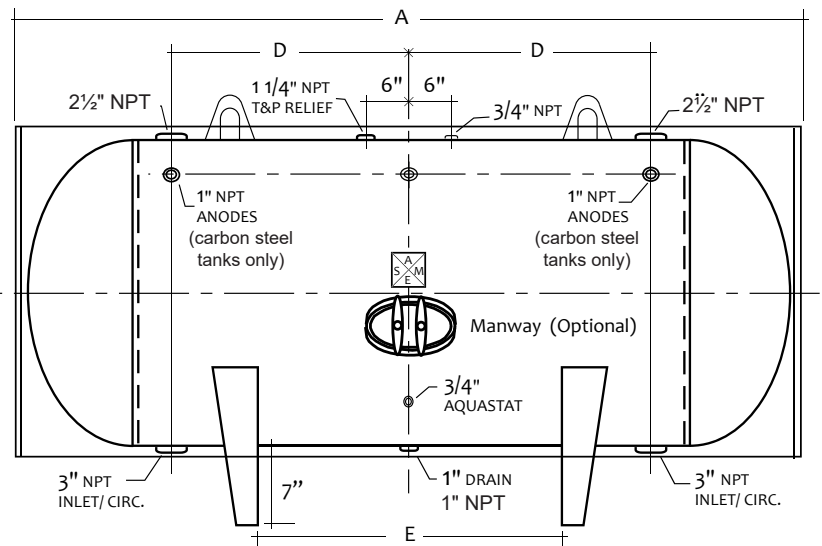
Code	ASME Sec IV HLW
Design Pressure	125 psi
Parts Warranty	One Year, Limited
Exterior	Heavy Ga. Steel Jacket
Insulation	2" High Density Foam w/12.5 R-Value
Supports	Saddles
Capacity	320 Gallons
Nominal Capacity	340 Gallons
Weight	774 Lbs.

Dimensions

Callout	Value	Description
A	115"	Overall Length
B	41"	Overall Height
C	34"	Diameter
D	42"	Circulation
E	60"	Supports
F	26.4"	Support Width

Options

- ☐ 150 PSI Vessel
- ☐ Hand Hole
- ☐ Optional Fittings / Additional Notes:



Customer Service and Product Support: 800.900.9276 • Fax 800.559.1583
 Headquarters: 20 Industrial Way, Rochester, NH, USA 03867 • 603.335.6300 • Fax 603.335.3355
 9 Brigden Gate, Halton Hills, Ontario, Canada L7G 0A3 • 905.203.0600 • Fax 905.636.0666
www.Laars.com Litho in U.S.A. © Laars Heating Systems 20-09 Document 4224F

Tank, Horizontal Jacketed

Design

- ☐ STHGJ Carbon Steel, Glass Lined
Five-Year Tank Limited Warranty
- ☐ STHDJ Carbon Steel, Double-Glass Lined
Ten-Year Tank Limited Warranty
- ☐ STHEJ Carbon Steel, Epoxy Lining
One-Year Tank Limited Warranty
- ☐ STH2J Duplex Stainless Steel
Twenty-Five-Year* Tank Limited Warranty
*See warranty sheet for details
- ☐ STH3J 316L Stainless Steel
Ten-Year Tank Limited Warranty

STHGJ36072 STH2J36072
STHDJ36072 STH3J36072
STHEJ36072



Submittal Data

Date:

Project #:

Engineer:

Prepared By:

Bid Date:

Project Name:

Location:

Contractor:

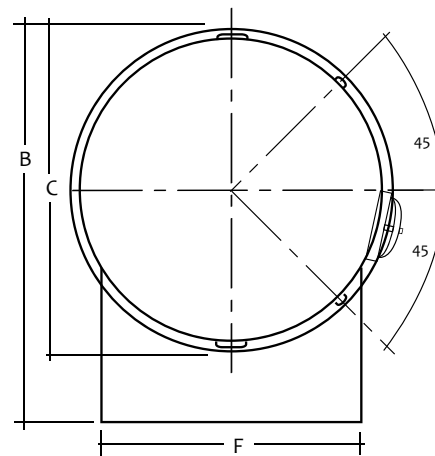
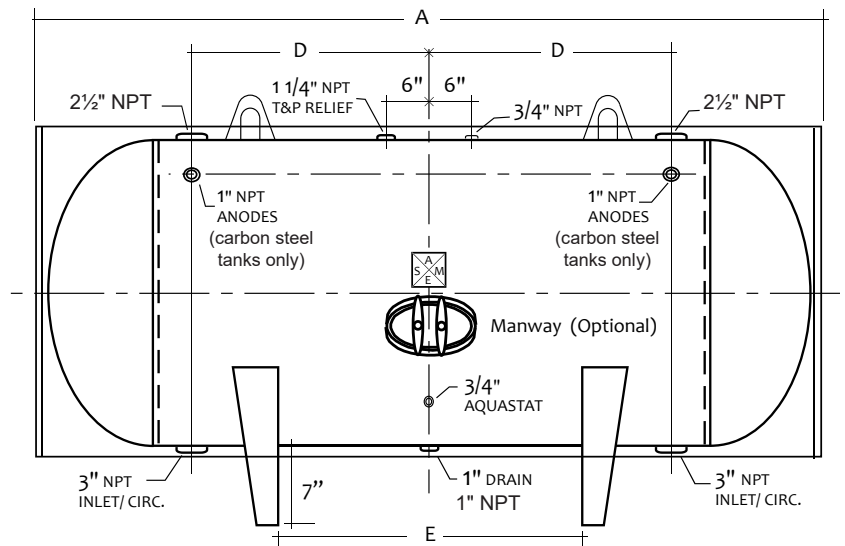
Code	ASME Sec IV HLW
Design Pressure	125 psi
Parts Warranty	One Year, Limited
Exterior	Heavy Ga. Steel Jacket
Insulation	2" High Density Foam w/12.5 R-Value
Supports	Saddles
Capacity	285 Gallons
Nominal Capacity	318 Gallons
Weight	776 Lbs.

Dimensions

Callout	Value	Description
A	76"	Overall Length
B	47"	Overall Height
C	40"	Diameter
D	21"	Circulation
E	18"	Supports
F	31.7"	Support Width

Options

- ☐ 150 PSI Vessel
- ☐ Hand Hole
- ☐ Optional Fittings / Additional Notes:



Tank, Horizontal Jacketed

Design

- ☐ STHGJ Carbon Steel, Glass Lined
Five-Year Tank Limited Warranty
- ☐ STHDJ Carbon Steel, Double-Glass Lined
Ten-Year Tank Limited Warranty
- ☐ STHEJ Carbon Steel, Epoxy Lining
One-Year Tank Limited Warranty
- ☐ STH2J Duplex Stainless Steel
Twenty-Five-Year* Tank Limited Warranty
*See warranty sheet for details
- ☐ STH3J 316L Stainless Steel
Ten-Year Tank Limited Warranty

STHGJ36078

STHDJ36078

STHEJ36078

STH2J36078

STH3J36078



Submittal Data

Date:

Project #:

Engineer:

Prepared By:

Bid Date:

Project Name:

Location:

Contractor:

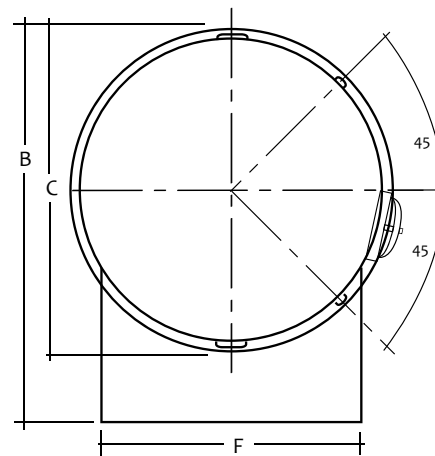
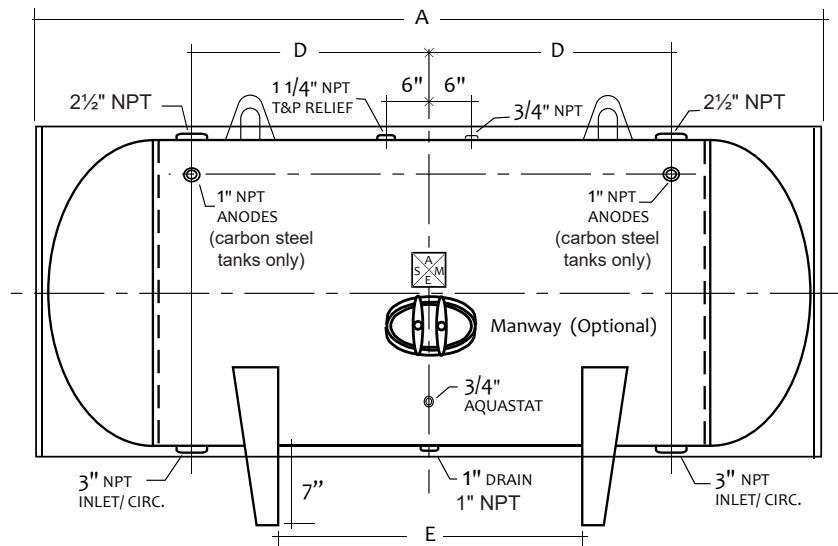
Code	ASME Sec IV HLW
Design Pressure	125 psi
Parts Warranty	One Year, Limited
Exterior	Heavy Ga. Steel Jacket
Insulation	2" High Density Foam w/12.5 R-Value
Supports	Saddles
Capacity	310 Gallons
Nominal Capacity	344 Gallons
Weight	827 Lbs.

Dimensions

Callout	Value	Description
A	82"	Overall Length
B	47"	Overall Height
C	40"	Diameter
D	24"	Circulation
E	24"	Supports
F	31.7"	Support Width

Options

- ☐ 150 PSI Vessel
- ☐ Hand Hole
- ☐ Optional Fittings / Additional Notes:



Customer Service and Product Support: 800.900.9276 • Fax 800.559.1583
 Headquarters: 20 Industrial Way, Rochester, NH, USA 03867 • 603.335.6300 • Fax 603.335.3355
 9 Brigden Gate, Halton Hills, Ontario, Canada L7G 0A3 • 905.203.0600 • Fax 905.636.0666
www.Laars.com Litho in U.S.A. © Laars Heating Systems 20-09 Document 4224F

Tank, Horizontal Jacketed

Design

- ☐ STHGJ Carbon Steel, Glass Lined
Five-Year Tank Limited Warranty
- ☐ STHDJ Carbon Steel, Double-Glass Lined
Ten-Year Tank Limited Warranty
- ☐ STHEJ Carbon Steel, Epoxy Lining
One-Year Tank Limited Warranty
- ☐ STH2J Duplex Stainless Steel
Twenty-Five-Year* Tank Limited Warranty
*See warranty sheet for details
- ☐ STH3J 316L Stainless Steel
Ten-Year Tank Limited Warranty

STHGJ36085
STHDJ36085
STHEJ36085

STH2J36085
STH3J36085



Submittal Data

Date:

Project #:

Engineer:

Prepared By:

Bid Date:

Project Name:

Location:

Contractor:

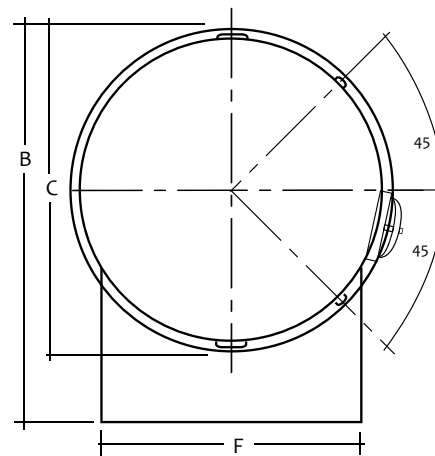
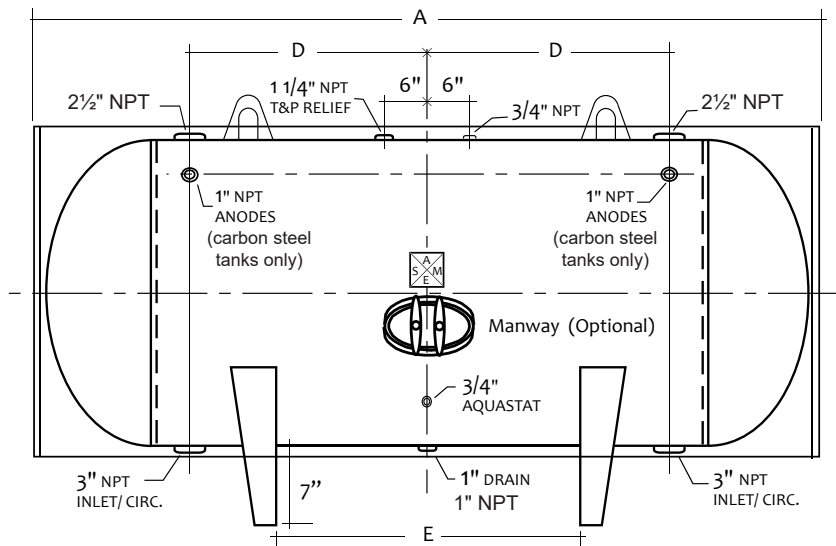
Code	ASME Sec IV HLW
Design Pressure	125 psi
Parts Warranty	One Year, Limited
Exterior	Heavy Ga. Steel Jacket
Insulation	2" High Density Foam w/12.5 R-Value
Supports	Saddles
Capacity	340 Gallons
Nominal Capacity	375 Gallons
Weight	876 Lbs.

Dimensions

Callout	Value	Description
A	89"	Overall Length
B	47"	Overall Height
C	40"	Diameter
D	27.5"	Circulation
E	31"	Supports
F	31.7"	Support Width

Options

- ☐ 150 PSI Vessel
- ☐ Hand Hole
- ☐ Optional Fittings / Additional Notes:



Customer Service and Product Support: 800.900.9276 • Fax 800.559.1583
Headquarters: 20 Industrial Way, Rochester, NH, USA 03867 • 603.335.6300 • Fax 603.335.3355
9 Brigden Gate, Halton Hills, Ontario, Canada L7G 0A3 • 905.203.0600 • Fax 905.636.0666
www.Laars.com
Litho in U.S.A. © Laars Heating Systems 20-09 Document 4224F

Tank, Horizontal Jacketed

Design

- ☐ STHGJ Carbon Steel, Glass Lined
Five-Year Tank Limited Warranty
- ☐ STHDJ Carbon Steel, Double-Glass Lined
Ten-Year Tank Limited Warranty
- ☐ STHEJ Carbon Steel, Epoxy Lining
One-Year Tank Limited Warranty
- ☐ STH2J Duplex Stainless Steel
Twenty-Five-Year* Tank Limited Warranty
*See warranty sheet for details
- ☐ STH3J 316L Stainless Steel
Ten-Year Tank Limited Warranty

STHGJ36090

STH2J36090

STHDJ36090

STH3J36090

STHEJ36090



Date:

Project #:

Engineer:

Prepared By:

Bid Date:

Submittal Data

Project Name:

Location:

Contractor:

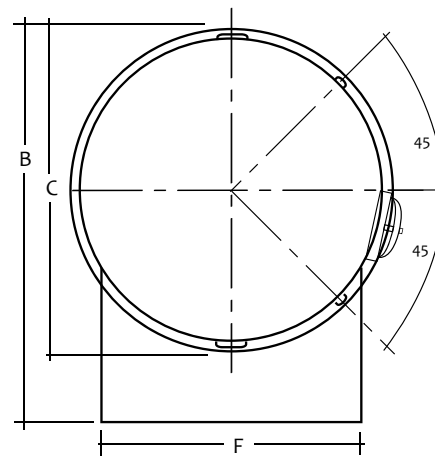
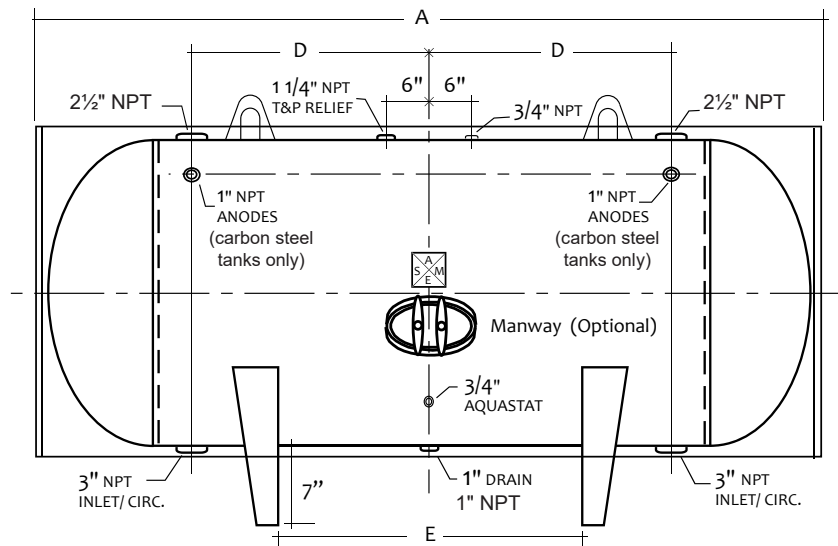
Code	ASME Sec IV HLW
Design Pressure	125 psi
Parts Warranty	One Year, Limited
Exterior	Heavy Ga. Steel Jacket
Insulation	2" High Density Foam w/12.5 R-Value
Supports	Saddles
Capacity	360 Gallons
Nominal Capacity	397 Gallons
Weight	935 Lbs.

Dimensions

Callout	Value	Description
A	94"	Overall Length
B	47"	Overall Height
C	40"	Diameter
D	30"	Circulation
E	36"	Supports
F	31.7"	Support Width

Options

- ☐ 150 PSI Vessel
- ☐ Hand Hole
- ☐ Optional Fittings / Additional Notes:



Customer Service and Product Support: 800.900.9276 • Fax 800.559.1583
Headquarters: 20 Industrial Way, Rochester, NH, USA 03867 • 603.335.6300 • Fax 603.335.3355
9 Brigden Gate, Halton Hills, Ontario, Canada L7G 0A3 • 905.203.0600 • Fax 905.636.0666

www.Laars.com

Litho in U.S.A. © Laars Heating Systems 20-09 Document 4224F

Tank, Horizontal Jacketed

Design

- ☐ STHGJ Carbon Steel, Glass Lined
Five-Year Tank Limited Warranty
- ☐ STHDJ Carbon Steel, Double-Glass Lined
Ten-Year Tank Limited Warranty
- ☐ STHEJ Carbon Steel, Epoxy Lining
One-Year Tank Limited Warranty
- ☐ STH2J Duplex Stainless Steel
Twenty-Five-Year* Tank Limited Warranty
*See warranty sheet for details
- ☐ STH3J 316L Stainless Steel
Ten-Year Tank Limited Warranty

STHGJ36102
STHDJ36102
STHEJ36102

STH2J36102
STH3J36102



Submittal Data

Date:

Project #:

Engineer:

Prepared By:

Bid Date:

Project Name:

Location:

Contractor:

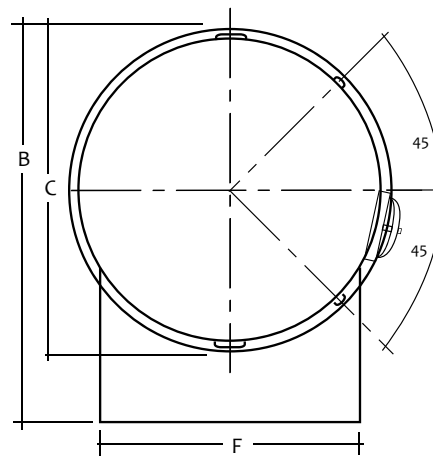
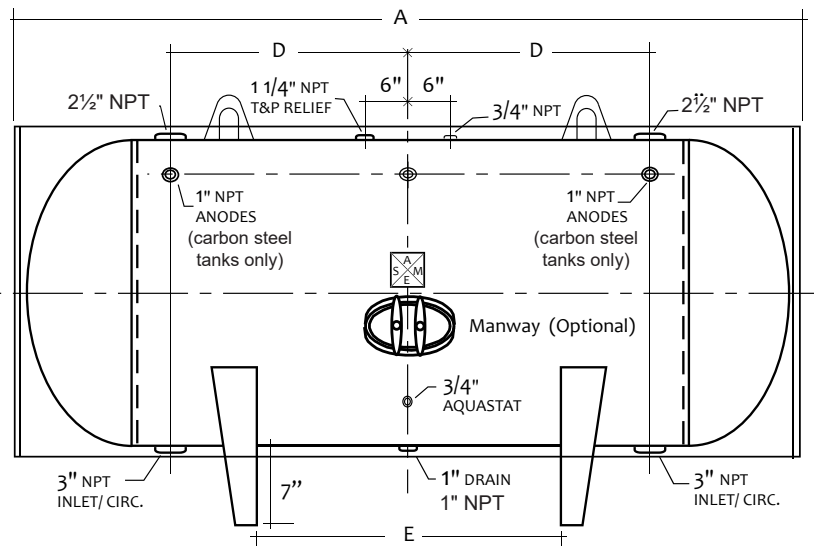
Code	ASME Sec IV HLW
Design Pressure	125 psi
Parts Warranty	One Year, Limited
Exterior	Heavy Ga. Steel Jacket
Insulation	2" High Density Foam w/12.5 R-Value
Supports	Saddles
Capacity	415 Gallons
Nominal Capacity	449 Gallons
Weight	1016 Lbs.

Dimensions

Callout	Value	Description
A	102"	Overall Length
B	47"	Overall Height
C	40"	Diameter
D	36"	Circulation
E	48"	Supports
F	31.7"	Support Width

Options

- ☐ 150 PSI Vessel
- ☐ Hand Hole
- ☐ Optional Fittings / Additional Notes:



Customer Service and Product Support: 800.900.9276 • Fax 800.559.1583
Headquarters: 20 Industrial Way, Rochester, NH, USA 03867 • 603.335.6300 • Fax 603.335.3355
9 Brigden Gate, Halton Hills, Ontario, Canada L7G 0A3 • 905.203.0600 • Fax 905.636.0666
www.Laars.com
Litho in U.S.A. © Laars Heating Systems 20-09 Document 4224F

Tank, Horizontal Jacketed

Design

- ☐ STHGJ Carbon Steel, Glass Lined
Five-Year Tank Limited Warranty
- ☐ STHDJ Carbon Steel, Double-Glass Lined
Ten-Year Tank Limited Warranty
- ☐ STHEJ Carbon Steel, Epoxy Lining
One-Year Tank Limited Warranty
- ☐ STH2J Duplex Stainless Steel
Twenty-Five-Year* Tank Limited Warranty
*See warranty sheet for details
- ☐ STH3J 316L Stainless Steel
Ten-Year Tank Limited Warranty

STHGJ36114
STHDJ36114
STHEJ36114

STH2J36114
STH3J36114



Submittal Data

Date:

Project #:

Engineer:

Prepared By:

Bid Date:

Project Name:

Location:

Contractor:

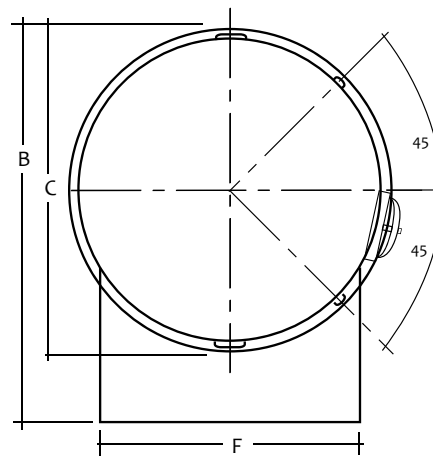
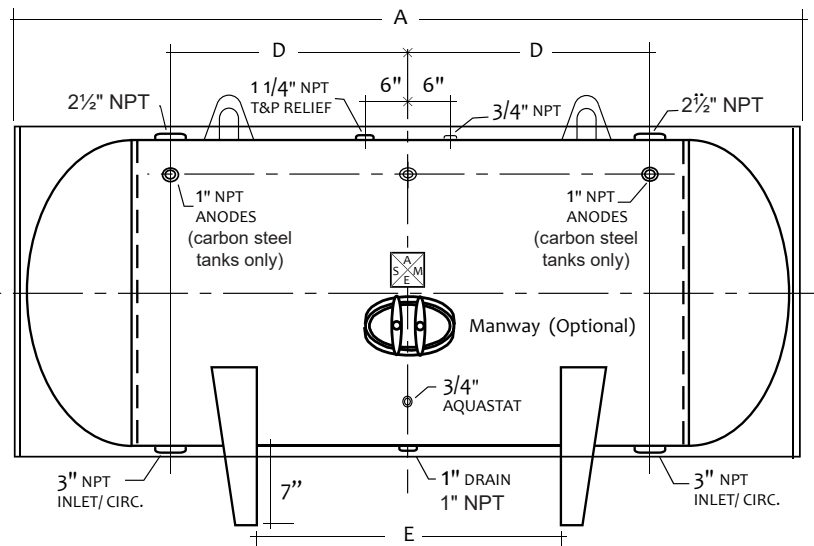
Code	ASME Sec IV HLW
Design Pressure	125 psi
Parts Warranty	One Year, Limited
Exterior	Heavy Ga. Steel Jacket
Insulation	2" High Density Foam w/12.5 R-Value
Supports	Saddles
Capacity	465 Gallons
Nominal Capacity	502 Gallons
Weight	1157 Lbs.

Dimensions

Callout	Value	Description
A	118"	Overall Length
B	47"	Overall Height
C	40"	Diameter
D	42"	Circulation
E	60"	Supports
F	31.7"	Support Width

Options

- ☐ 150 PSI Vessel
- ☐ Hand Hole
- ☐ Optional Fittings / Additional Notes:



Customer Service and Product Support: 800.900.9276 • Fax 800.559.1583
Headquarters: 20 Industrial Way, Rochester, NH, USA 03867 • 603.335.6300 • Fax 603.335.3355
9 Brigden Gate, Halton Hills, Ontario, Canada L7G 0A3 • 905.203.0600 • Fax 905.636.0666
www.Laars.com
Litho in U.S.A. © Laars Heating Systems 20-09 Document 4224F

Tank, Horizontal Jacketed

Design

- ☐ STHGJ Carbon Steel, Glass Lined
Five-Year Tank Limited Warranty
- ☐ STHDJ Carbon Steel, Double-Glass Lined
Ten-Year Tank Limited Warranty
- ☐ STHEJ Carbon Steel, Epoxy Lining
One-Year Tank Limited Warranty
- ☐ STH2J Duplex Stainless Steel
Twenty-Five-Year* Tank Limited Warranty
*See warranty sheet for details
- ☐ STH3J 316L Stainless Steel
Ten-Year Tank Limited Warranty

STHGJ36126
STHDJ36126
STHEJ36126

STH2J36126
STH3J36126



Submittal Data

Date:

Project #:

Engineer:

Prepared By:

Bid Date:

Project Name:

Location:

Contractor:

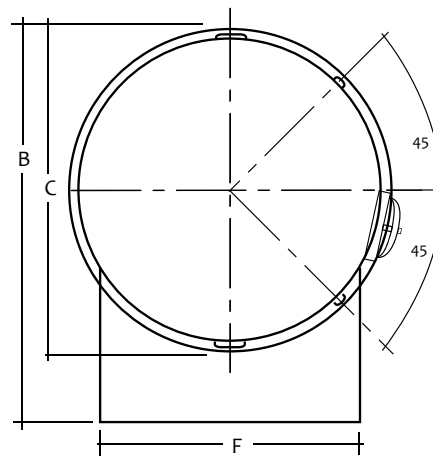
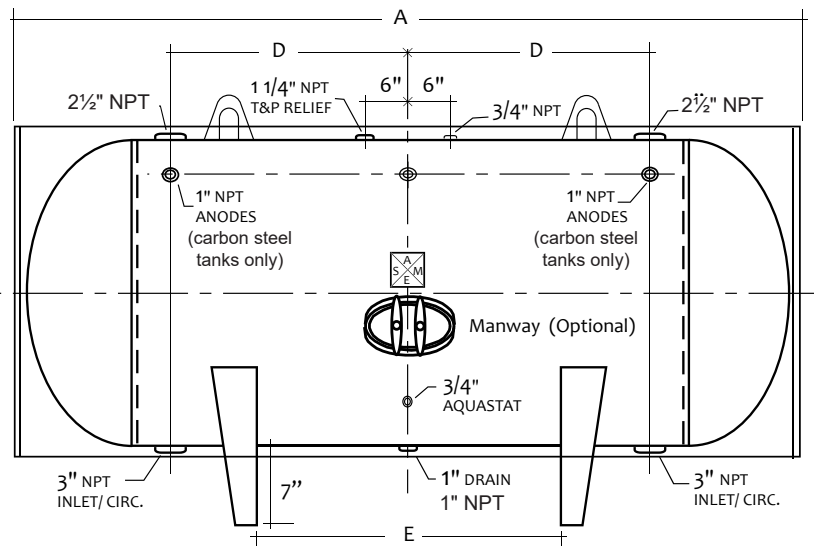
Code	ASME Sec IV HLW
Design Pressure	125 psi
Parts Warranty	One Year, Limited
Exterior	Heavy Ga. Steel Jacket
Insulation	2" High Density Foam w/12.5 R-Value
Supports	Saddles
Capacity	515 Gallons
Nominal Capacity	555 Gallons
Weight	1260 Lbs.

Dimensions

Callout	Value	Description
A	130"	Overall Length
B	47"	Overall Height
C	40"	Diameter
D	48"	Circulation
E	72"	Supports
F	31.7"	Support Width

Options

- ☐ 150 PSI Vessel
- ☐ Hand Hole
- ☐ Optional Fittings / Additional Notes:



Customer Service and Product Support: 800.900.9276 • Fax 800.559.1583
Headquarters: 20 Industrial Way, Rochester, NH, USA 03867 • 603.335.6300 • Fax 603.335.3355
9 Brigden Gate, Halton Hills, Ontario, Canada L7G 0A3 • 905.203.0600 • Fax 905.636.0666
www.Laars.com Litho in U.S.A. © Laars Heating Systems 20-09 Document 4224F

Tank, Horizontal Jacketed

Design

- ☐ STHGJ Carbon Steel, Glass Lined
Five-Year Tank Limited Warranty
- ☐ STHDJ Carbon Steel, Double-Glass Lined
Ten-Year Tank Limited Warranty
- ☐ STHEJ Carbon Steel, Epoxy Lining
One-Year Tank Limited Warranty
- ☐ STH2J Duplex Stainless Steel
Twenty-Five-Year* Tank Limited Warranty
*See warranty sheet for details
- ☐ STH3J 316L Stainless Steel
Ten-Year Tank Limited Warranty

STHGJ42081

STHDJ42081

STHEJ42081

STH2J42081

STH3J42081



Submittal Data

Date:

Project #:

Engineer:

Prepared By:

Bid Date:

Project Name:

Location:

Contractor:

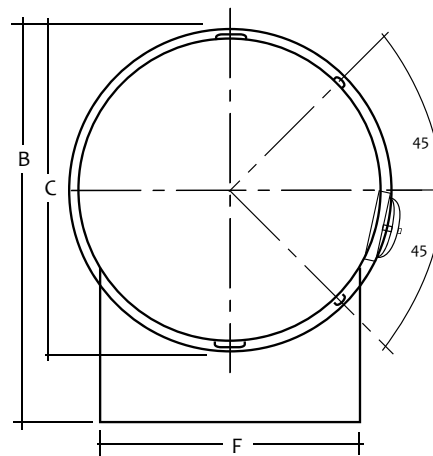
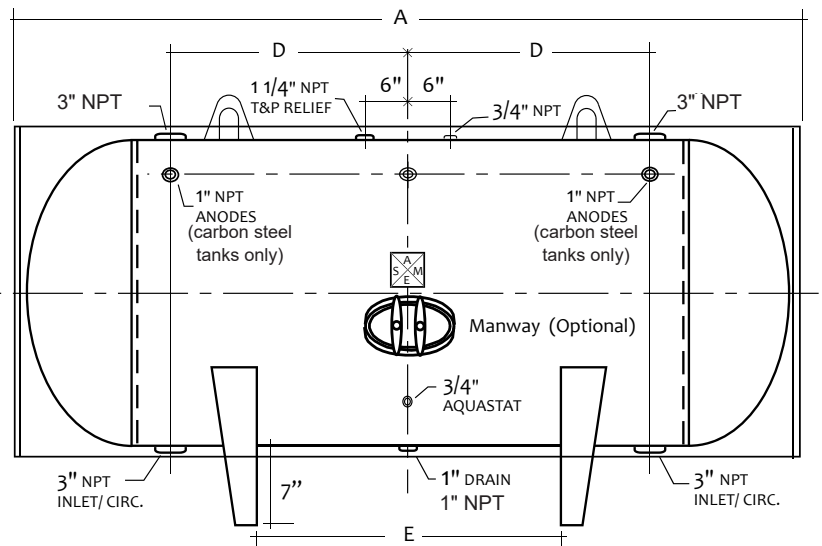
Code	ASME Sec IV HLW
Design Pressure	125 psi
Parts Warranty	One Year, Limited
Exterior	Heavy Ga. Steel Jacket
Insulation	2" High Density Foam w/12.5 R-Value
Supports	Saddles
Capacity	435 Gallons
Nominal Capacity	486 Gallons
Weight	1110 Lbs.

Dimensions

Callout	Value	Description
A	85"	Overall Length
B	53"	Overall Height
C	46"	Diameter
D	24"	Circulation
E	24"	Supports
F	36.8"	Support Width

Options

- ☐ 150 PSI Vessel
- ☐ Hand Hole
- ☐ Optional Fittings / Additional Notes:



Customer Service and Product Support: 800.900.9276 • Fax 800.559.1583
Headquarters: 20 Industrial Way, Rochester, NH, USA 03867 • 603.335.6300 • Fax 603.335.3355
9 Brigden Gate, Halton Hills, Ontario, Canada L7G 0A3 • 905.203.0600 • Fax 905.636.0666

www.Laars.com

Litho in U.S.A. © Laars Heating Systems 20-09 Document 4224F

Tank, Horizontal Jacketed

Design

- ☐ STHGJ Carbon Steel, Glass Lined
Five-Year Tank Limited Warranty
- ☐ STHDJ Carbon Steel, Double-Glass Lined
Ten-Year Tank Limited Warranty
- ☐ STHEJ Carbon Steel, Epoxy Lining
One-Year Tank Limited Warranty
- ☐ STH2J Duplex Stainless Steel
Twenty-Five-Year* Tank Limited Warranty
*See warranty sheet for details
- ☐ STH3J 316L Stainless Steel
Ten-Year Tank Limited Warranty

STHGJ42084
STHDJ42084
STHEJ42084

STH2J42084
STH3J42084



Submittal Data

Date:

Project #:

Engineer:

Prepared By:

Bid Date:

Project Name:

Location:

Contractor:

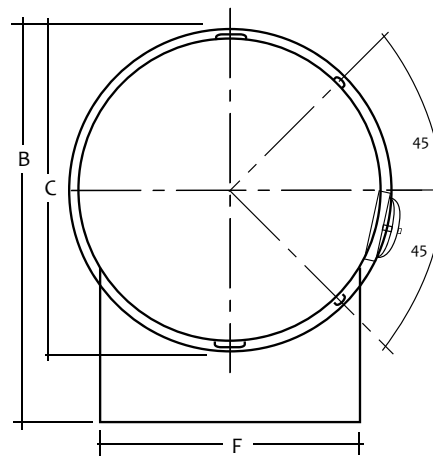
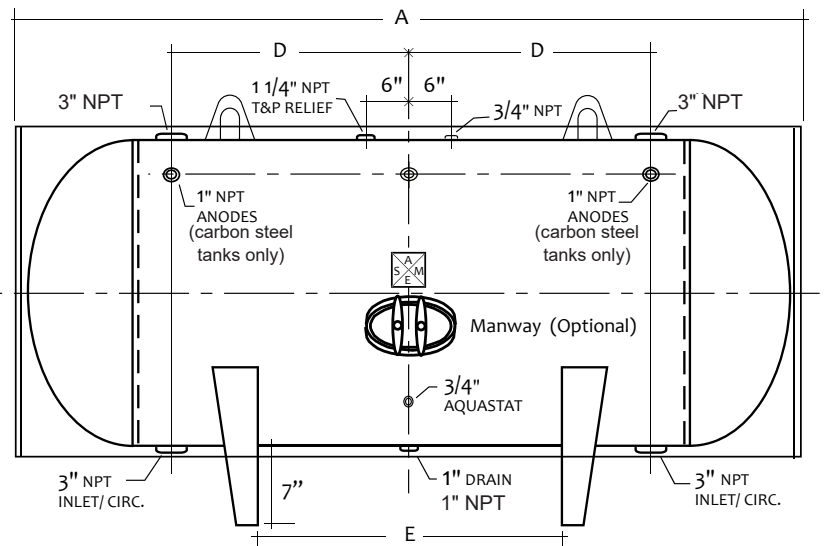
Code	ASME Sec IV HLW
Design Pressure	125 psi
Parts Warranty	One Year, Limited
Exterior	Heavy Ga. Steel Jacket
Insulation	2" High Density Foam w/12.5 R-Value
Supports	Saddles
Capacity	453 Gallons
Nominal Capacity	504 Gallons
Weight	1049 Lbs.

Dimensions

Callout	Value	Description
A	88"	Overall Length
B	53"	Overall Height
C	46"	Diameter
D	25.5"	Circulation
E	27"	Supports
F	36.8"	Support Width

Options

- ☐ 150 PSI Vessel
- ☐ Hand Hole
- ☐ Optional Fittings / Additional Notes:



Tank, Horizontal Jacketed

Design

- ☐ STHGJ Carbon Steel, Glass Lined
Five-Year Tank Limited Warranty
- ☐ STHDJ Carbon Steel, Double-Glass Lined
Ten-Year Tank Limited Warranty
- ☐ STHEJ Carbon Steel, Epoxy Lining
One-Year Tank Limited Warranty
- ☐ STH2J Duplex Stainless Steel
Twenty-Five-Year* Tank Limited Warranty
*See warranty sheet for details
- ☐ STH3J 316L Stainless Steel
Ten-Year Tank Limited Warranty

STHGJ42093 STH2J42093
STHDJ42093 STH3J42093
STHEJ42093



Submittal Data

Date:

Project #:

Engineer:

Prepared By:

Bid Date:

Project Name:

Location:

Contractor:

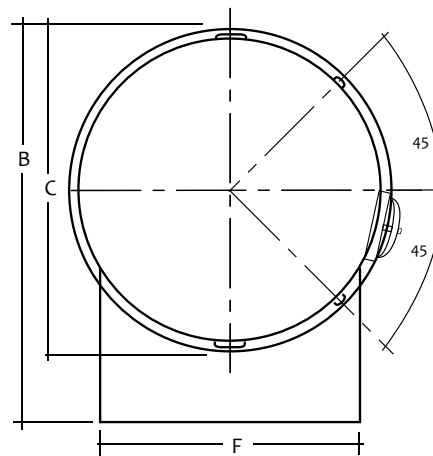
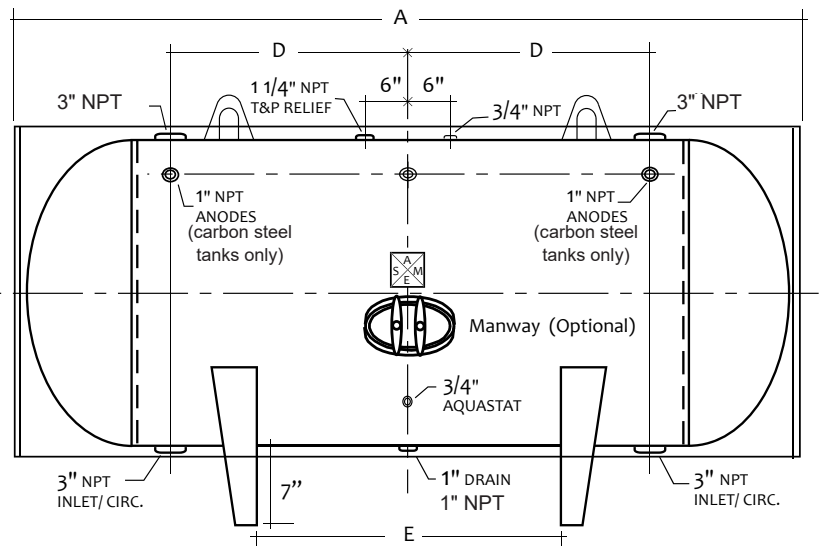
Code	ASME Sec IV HLW
Design Pressure	125 psi
Parts Warranty	One Year, Limited
Exterior	Heavy Ga. Steel Jacket
Insulation	2" High Density Foam w/12.5 R-Value
Supports	Saddles
Capacity	505 Gallons
Nominal Capacity	558 Gallons
Weight	1181 Lbs.

Dimensions

Callout	Value	Description
A	97"	Overall Length
B	53"	Overall Height
C	46"	Diameter
D	30"	Circulation
E	36"	Supports
F	36.8"	Support Width

Options

- ☐ 150 PSI Vessel
- ☐ Hand Hole
- ☐ Optional Fittings / Additional Notes:



Customer Service and Product Support: 800.900.9276 • Fax 800.559.1583
Headquarters: 20 Industrial Way, Rochester, NH, USA 03867 • 603.335.6300 • Fax 603.335.3355
9 Brigden Gate, Halton Hills, Ontario, Canada L7G 0A3 • 905.203.0600 • Fax 905.636.0666
www.Laars.com
Litho in U.S.A. © Laars Heating Systems 20-09 Document 4224F

Tank, Horizontal Jacketed

Design

- ☐ STHGJ Carbon Steel, Glass Lined
Five-Year Tank Limited Warranty
- ☐ STHDJ Carbon Steel, Double-Glass Lined
Ten-Year Tank Limited Warranty
- ☐ STHEJ Carbon Steel, Epoxy Lining
One-Year Tank Limited Warranty
- ☐ STH2J Duplex Stainless Steel
Twenty-Five-Year* Tank Limited Warranty
*See warranty sheet for details
- ☐ STH3J 316L Stainless Steel
Ten-Year Tank Limited Warranty

STHGJ42105
STHDJ42105
STHEJ42105

STH2J42105
STH3J42105



Submittal Data

Date:

Project #:

Engineer:

Prepared By:

Bid Date:

Project Name:

Location:

Contractor:

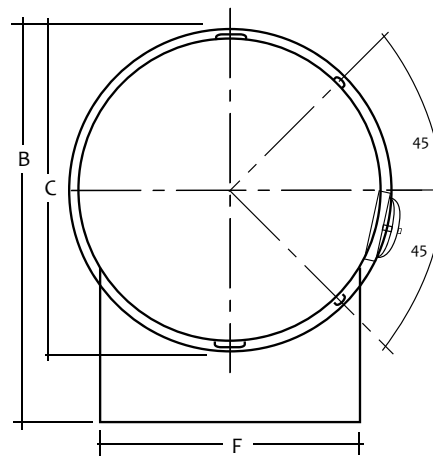
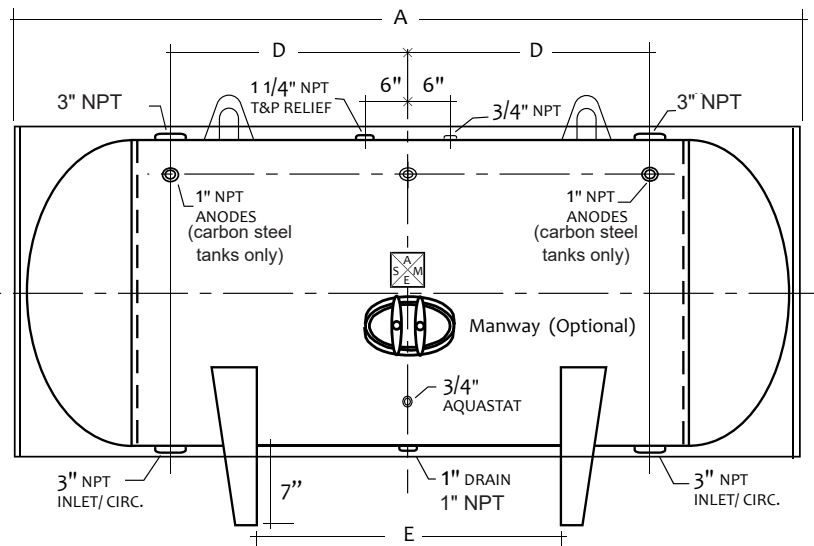
Code	ASME Sec IV HLW
Design Pressure	125 psi
Parts Warranty	One Year, Limited
Exterior	Heavy Ga. Steel Jacket
Insulation	2" High Density Foam w/12.5 R-Value
Supports	Saddles
Capacity	575 Gallons
Nominal Capacity	630 Gallons
Weight	1263 Lbs.

Dimensions

Callout	Value	Description
A	109"	Overall Length
B	53"	Overall Height
C	46"	Diameter
D	36"	Circulation
E	48"	Supports
F	36.8"	Support Width

Options

- ☐ 150 PSI Vessel
- ☐ Hand Hole
- ☐ Optional Fittings / Additional Notes:



Tank, Horizontal Jacketed

Design

- ☐ STHGJ Carbon Steel, Glass Lined
Five-Year Tank Limited Warranty
- ☐ STHDJ Carbon Steel, Double-Glass Lined
Ten-Year Tank Limited Warranty
- ☐ STHEJ Carbon Steel, Epoxy Lining
One-Year Tank Limited Warranty
- ☐ STH2J Duplex Stainless Steel
Twenty-Five-Year* Tank Limited Warranty
*See warranty sheet for details
- ☐ STH3J 316L Stainless Steel
Ten-Year Tank Limited Warranty

STHGJ42117

STHDJ42117

STHEJ42117

STH2J42117

STH3J42117



Submittal Data

Date:

Project #:

Engineer:

Prepared By:

Bid Date:

Project Name:

Location:

Contractor:

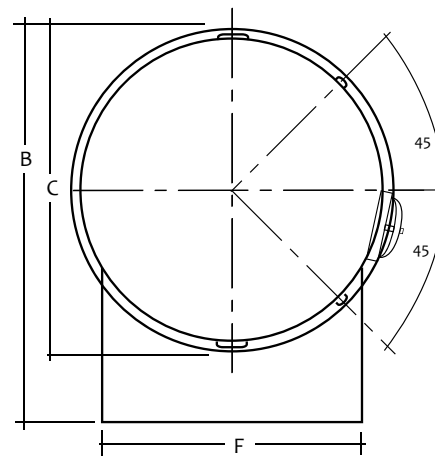
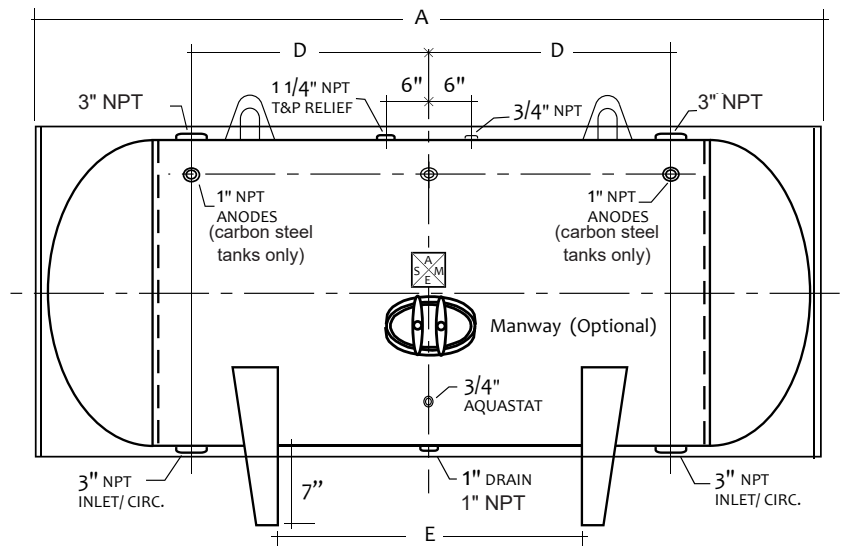
Code	ASME Sec IV HLW
Design Pressure	125 psi
Parts Warranty	One Year, Limited
Exterior	Heavy Ga. Steel Jacket
Insulation	2" High Density Foam w/12.5 R-Value
Supports	Saddles
Capacity	645 Gallons
Nominal Capacity	702 Gallons
Weight	1352 Lbs.

Dimensions

Callout	Value	Description
A	121"	Overall Length
B	53"	Overall Height
C	46"	Diameter
D	42"	Circulation
E	60"	Supports
F	36.8"	Support Width

Options

- ☐ 150 PSI Vessel
- ☐ Hand Hole
- ☐ Optional Fittings / Additional Notes:



Tank, Horizontal Jacketed

Design

- ☐ STHGJ Carbon Steel, Glass Lined
Five-Year Tank Limited Warranty
- ☐ STHDJ Carbon Steel, Double-Glass Lined
Ten-Year Tank Limited Warranty
- ☐ STHEJ Carbon Steel, Epoxy Lining
One-Year Tank Limited Warranty
- ☐ STH2J Duplex Stainless Steel
Twenty-Five-Year* Tank Limited Warranty
*See warranty sheet for details
- ☐ STH3J 316L Stainless Steel
Ten-Year Tank Limited Warranty

STHGJ42129

STH2J42129

STHDJ42129

STH3J42129

STHEJ42129



Submittal Data

Date:

Project #:

Engineer:

Prepared By:

Bid Date:

Project Name:

Location:

Contractor:

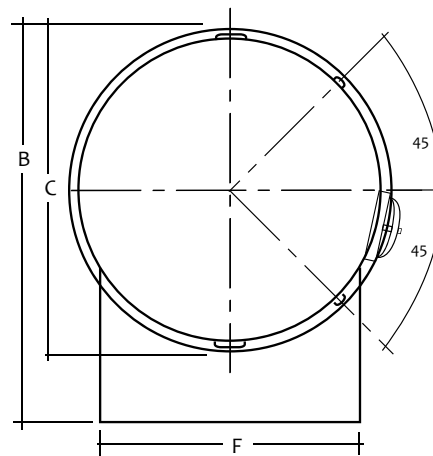
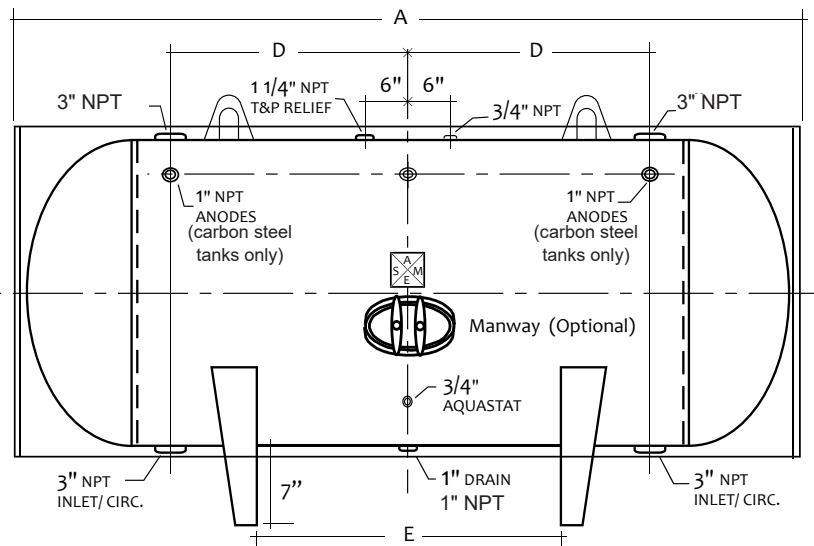
Code	ASME Sec IV HLW
Design Pressure	125 psi
Parts Warranty	One Year, Limited
Exterior	Heavy Ga. Steel Jacket
Insulation	2" High Density Foam w/12.5 R-Value
Supports	Saddles
Capacity	720 Gallons
Nominal Capacity	774 Gallons
Weight	1460 Lbs.

Dimensions

Callout	Value	Description
A	133"	Overall Length
B	53"	Overall Height
C	46"	Diameter
D	48"	Circulation
E	72"	Supports
F	36.8"	Support Width

Options

- ☐ 150 PSI Vessel
- ☐ Hand Hole
- ☐ Optional Fittings / Additional Notes:



Customer Service and Product Support: 800.900.9276 • Fax 800.559.1583
 Headquarters: 20 Industrial Way, Rochester, NH, USA 03867 • 603.335.6300 • Fax 603.335.3355
 9 Brigden Gate, Halton Hills, Ontario, Canada L7G 0A3 • 905.203.0600 • Fax 905.636.0666
www.Laars.com Litho in U.S.A. © Laars Heating Systems 20-09 Document 4224F

Tank, Horizontal Jacketed

Design

- ☐ STHGJ Carbon Steel, Glass Lined
Five-Year Tank Limited Warranty
- ☐ STHDJ Carbon Steel, Double-Glass Lined
Ten-Year Tank Limited Warranty
- ☐ STHEJ Carbon Steel, Epoxy Lining
One-Year Tank Limited Warranty
- ☐ STH2J Duplex Stainless Steel
Twenty-Five-Year* Tank Limited Warranty
*See warranty sheet for details
- ☐ STH3J 316L Stainless Steel
Ten-Year Tank Limited Warranty

STHGJ42139 STH2J42139
STHDJ42139 STH3J42139
STHEJ42139



Submittal Data

Date:

Project #:

Engineer:

Prepared By:

Bid Date:

Project Name:

Location:

Contractor:

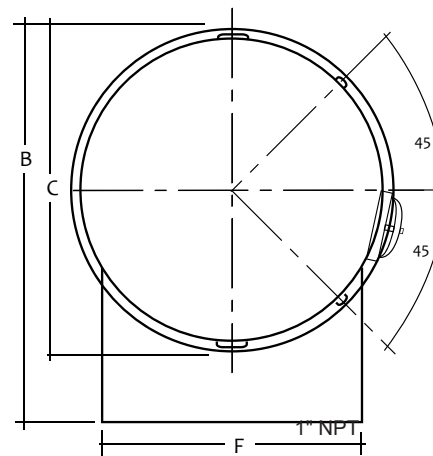
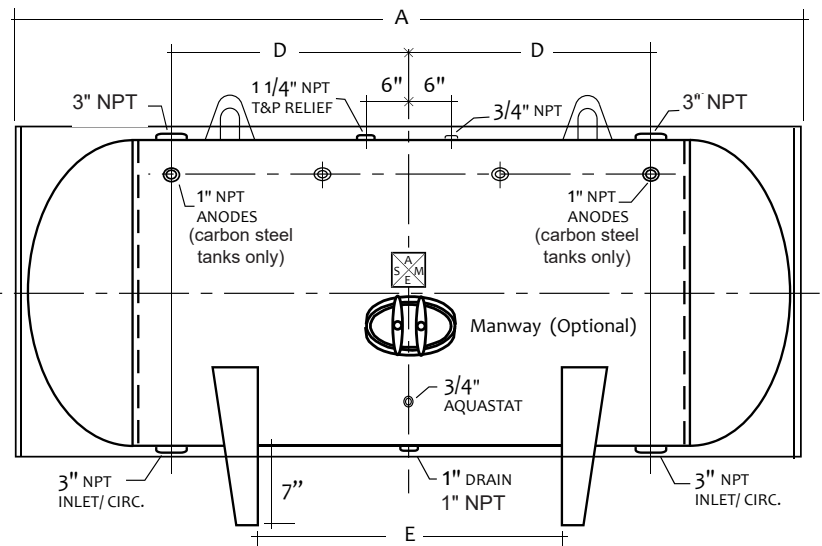
Code	ASME Sec IV HLW
Design Pressure	125 psi
Parts Warranty	One Year, Limited
Exterior	Heavy Ga. Steel Jacket
Insulation	2" High Density Foam w/12.5 R-Value
Supports	Saddles
Capacity	776 Gallons
Nominal Capacity	834 Gallons
Weight	1547 Lbs.

Dimensions

Callout	Value	Description
A	143"	Overall Length
B	53"	Overall Height
C	46"	Diameter
D	53"	Circulation
E	82"	Supports
F	36.8"	Support Width

Options

- ☐ 150 PSI Vessel
- ☐ Hand Hole
- ☐ Optional Fittings / Additional Notes:



Tank, Horizontal Jacketed

Design

- ☐ STHGJ Carbon Steel, Glass Lined
Five-Year Tank Limited Warranty
- ☐ STHDJ Carbon Steel, Double-Glass Lined
Ten-Year Tank Limited Warranty
- ☐ STHEJ Carbon Steel, Epoxy Lining
One-Year Tank Limited Warranty
- ☐ STH2J Duplex Stainless Steel
Twenty-Five-Year* Tank Limited Warranty
*See warranty sheet for details
- ☐ STH3J 316L Stainless Steel
Ten-Year Tank Limited Warranty

STHGJ48073

STH2J48073

STHDJ48073

STH3J48073

STHEJ48073



Submittal Data

Date:

Project #:

Engineer:

Prepared By:

Bid Date:

Project Name:

Location:

Contractor:

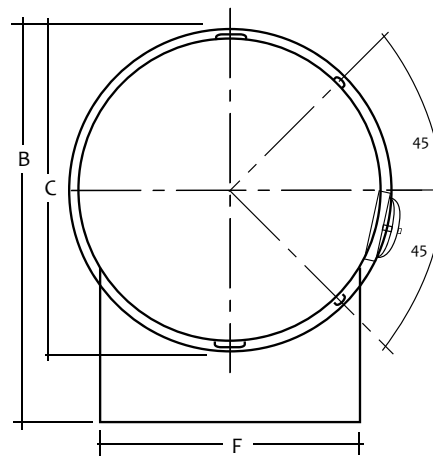
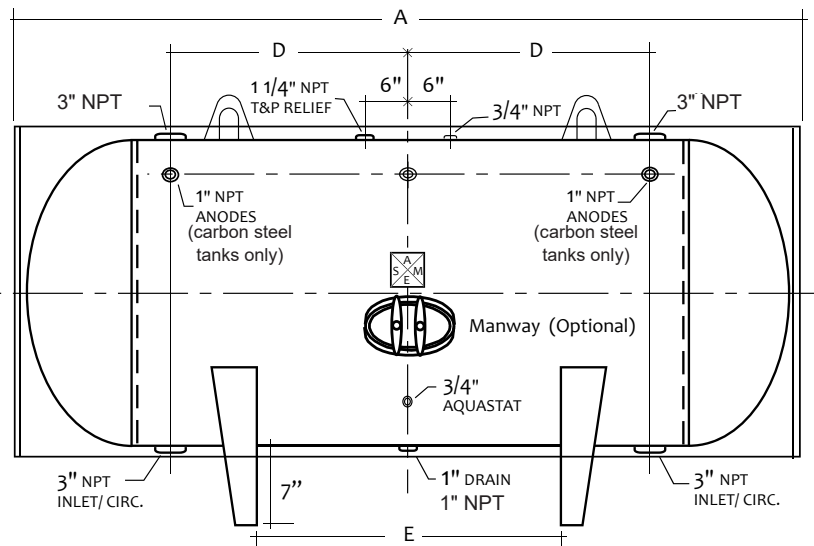
Code	ASME Sec IV HLW
Design Pressure	125 psi
Parts Warranty	One Year, Limited
Exterior	Heavy Ga. Steel Jacket
Insulation	2" High Density Foam w/12.5 R-Value
Supports	Saddles
Capacity	500 Gallons
Nominal Capacity	572 Gallons
Weight	1449 Lbs.

Dimensions

Callout	Value	Description
A	77"	Overall Length
B	59"	Overall Height
C	52"	Diameter
D	18.5"	Circulation
E	17"	Supports
F	42.1"	Support Width

Options

- ☐ 150 PSI Vessel
- ☐ Hand Hole
- ☐ Optional Fittings / Additional Notes:



Customer Service and Product Support: 800.900.9276 • Fax 800.559.1583
Headquarters: 20 Industrial Way, Rochester, NH, USA 03867 • 603.335.6300 • Fax 603.335.3355
9 Brigden Gate, Halton Hills, Ontario, Canada L7G 0A3 • 905.203.0600 • Fax 905.636.0666
www.Laars.com
Litho in U.S.A. © Laars Heating Systems 20-09 Document 4224F

Tank, Horizontal Jacketed

Design

- ☐ STHGJ Carbon Steel, Glass Lined
Five-Year Tank Limited Warranty
- ☐ STHDJ Carbon Steel, Double-Glass Lined
Ten-Year Tank Limited Warranty
- ☐ STHEJ Carbon Steel, Epoxy Lining
One-Year Tank Limited Warranty
- ☐ STH2J Duplex Stainless Steel
Twenty-Five-Year* Tank Limited Warranty
*See warranty sheet for details
- ☐ STH3J 316L Stainless Steel
Ten-Year Tank Limited Warranty

STHGJ48084

STH2J48084

STHDJ48084

STH3J48084

STHEJ48084



Submittal Data

Date:

Project #:

Engineer:

Prepared By:

Bid Date:

Project Name:

Location:

Contractor:

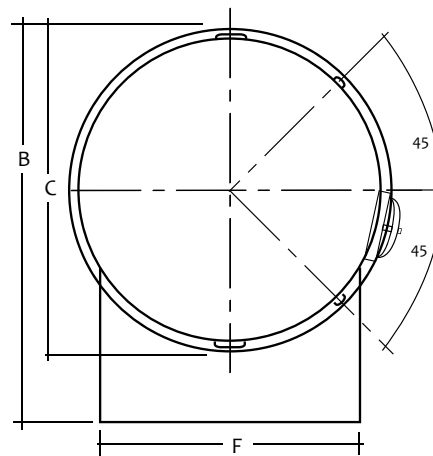
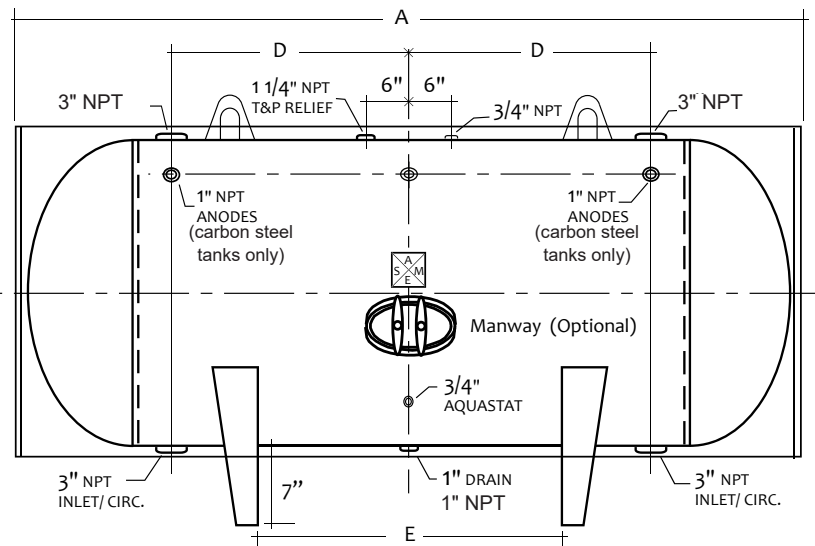
Code	ASME Sec IV HLW
Design Pressure	125 psi
Parts Warranty	One Year, Limited
Exterior	Heavy Ga. Steel Jacket
Insulation	2" High Density Foam w/12.5 R-Value
Supports	Saddles
Capacity	580 Gallons
Nominal Capacity	658 Gallons
Weight	1593 Lbs.

Dimensions

Callout	Value	Description
A	88"	Overall Length
B	59"	Overall Height
C	52"	Diameter
D	24"	Circulation
E	24"	Supports
F	42.1"	Support Width

Options

- ☐ 150 PSI Vessel
- ☐ Hand Hole
- ☐ Optional Fittings / Additional Notes:



Customer Service and Product Support: 800.900.9276 • Fax 800.559.1583
 Headquarters: 20 Industrial Way, Rochester, NH, USA 03867 • 603.335.6300 • Fax 603.335.3355
 9 Brigden Gate, Halton Hills, Ontario, Canada L7G 0A3 • 905.203.0600 • Fax 905.636.0666
www.Laars.com Litho in U.S.A. © Laars Heating Systems 20-09 Document 4224F

Tank, Horizontal Jacketed

Design

- ☐ STHGJ Carbon Steel, Glass Lined
Five-Year Tank Limited Warranty
- ☐ STHDJ Carbon Steel, Double-Glass Lined
Ten-Year Tank Limited Warranty
- ☐ STHEJ Carbon Steel, Epoxy Lining
One-Year Tank Limited Warranty
- ☐ STH2J Duplex Stainless Steel
Twenty-Five-Year* Tank Limited Warranty
*See warranty sheet for details
- ☐ STH3J 316L Stainless Steel
Ten-Year Tank Limited Warranty

STHGJ48096

STHDJ48096

STHEJ48096

STH2J48096

STH3J48096



Date:

Project #:

Engineer:

Prepared By:

Bid Date:

Submittal Data

Project Name:

Location:

Contractor:

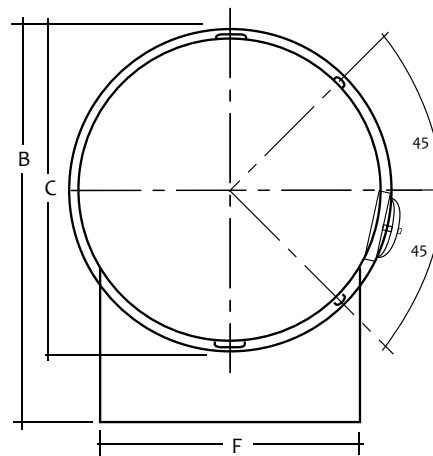
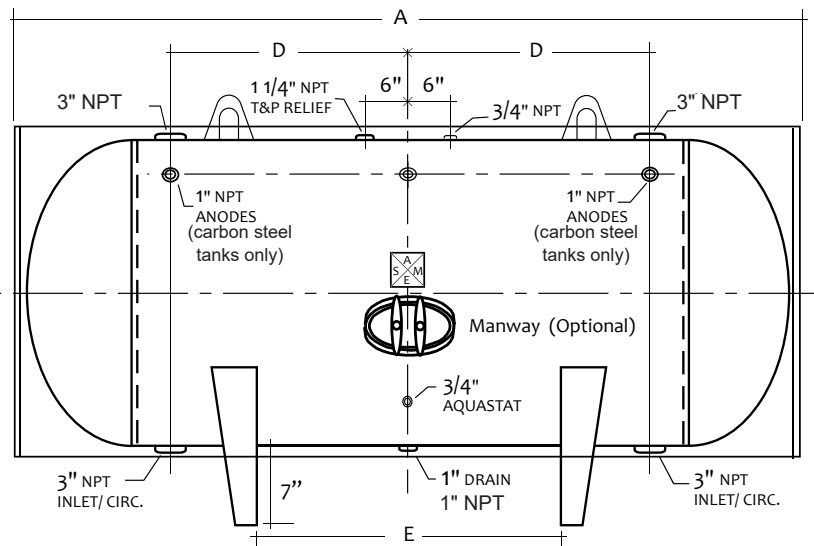
Code	ASME Sec IV HLW
Design Pressure	125 psi
Parts Warranty	One Year, Limited
Exterior	Heavy Ga. Steel Jacket
Insulation	2" High Density Foam w/12.5 R-Value
Supports	Saddles
Capacity	675 Gallons
Nominal Capacity	752 Gallons
Weight	1750 Lbs.

Dimensions

Callout	Value	Description
A	100"	Overall Length
B	59"	Overall Height
C	52"	Diameter
D	30"	Circulation
E	36"	Supports
F	42.1"	Support Width

Options

- ☐ 150 PSI Vessel
- ☐ Hand Hole
- ☐ Optional Fittings / Additional Notes:



Customer Service and Product Support: 800.900.9276 • Fax 800.559.1583
 Headquarters: 20 Industrial Way, Rochester, NH, USA 03867 • 603.335.6300 • Fax 603.335.3355
 9 Brigden Gate, Halton Hills, Ontario, Canada L7G 0A3 • 905.203.0600 • Fax 905.636.0666
www.Laars.com Litho in U.S.A. © Laars Heating Systems 20-09 Document 4224F

Tank, Horizontal Jacketed

Design

- ☐ STHGJ Carbon Steel, Glass Lined
Five-Year Tank Limited Warranty
- ☐ STHDJ Carbon Steel, Double-Glass Lined
Ten-Year Tank Limited Warranty
- ☐ STHEJ Carbon Steel, Epoxy Lining
One-Year Tank Limited Warranty
- ☐ STH2J Duplex Stainless Steel
Twenty-Five-Year* Tank Limited Warranty
*See warranty sheet for details
- ☐ STH3J 316L Stainless Steel
Ten-Year Tank Limited Warranty

STHGJ48108 STH2J48108
STHDJ48108 STH3J48108
STHEJ48108



Submittal Data

Date:

Project #:

Engineer:

Prepared By:

Bid Date:

Project Name:

Location:

Contractor:

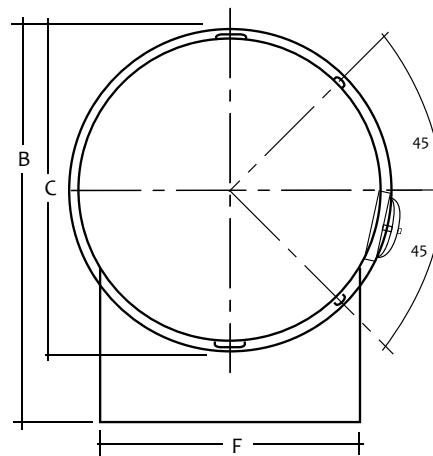
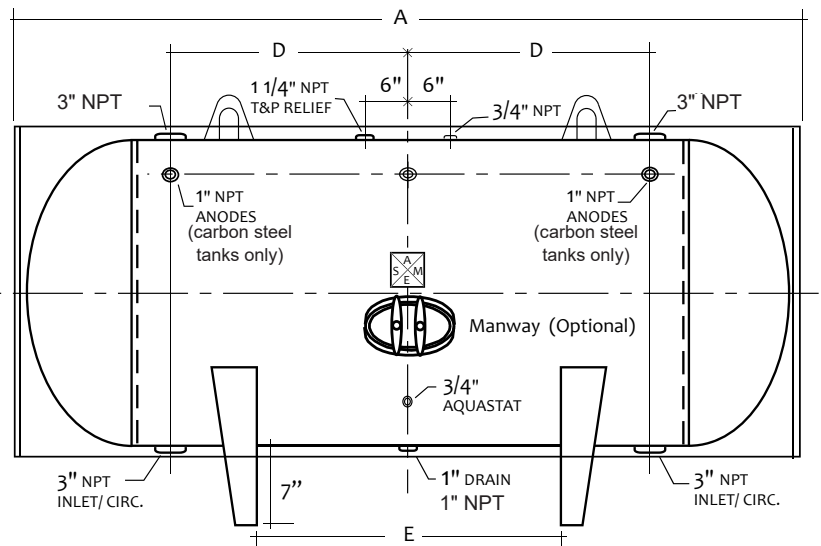
Code	ASME Sec IV HLW
Design Pressure	125 psi
Parts Warranty	One Year, Limited
Exterior	Heavy Ga. Steel Jacket
Insulation	2" High Density Foam w/12.5 R-Value
Supports	Saddles
Capacity	765 Gallons
Nominal Capacity	846 Gallons
Weight	1925 Lbs.

Dimensions

Callout	Value	Description
A	112"	Overall Length
B	59"	Overall Height
C	52"	Diameter
D	36"	Circulation
E	48"	Supports
F	42.1"	Support Width

Options

- ☐ 150 PSI Vessel
- ☐ Hand Hole
- ☐ Optional Fittings / Additional Notes:



Tank, Horizontal Jacketed

Design

- ☐ STHGJ Carbon Steel, Glass Lined
Five-Year Tank Limited Warranty
- ☐ STHDJ Carbon Steel, Double-Glass Lined
Ten-Year Tank Limited Warranty
- ☐ STHEJ Carbon Steel, Epoxy Lining
One-Year Tank Limited Warranty
- ☐ STH2J Duplex Stainless Steel
Twenty-Five-Year* Tank Limited Warranty
*See warranty sheet for details
- ☐ STH3J 316L Stainless Steel
Ten-Year Tank Limited Warranty

STHGJ48120 STH2J48120
STHDJ48120 STH3J48120
STHEJ48120



Submittal Data

Date:

Project #:

Engineer:

Prepared By:

Bid Date:

Project Name:

Location:

Contractor:

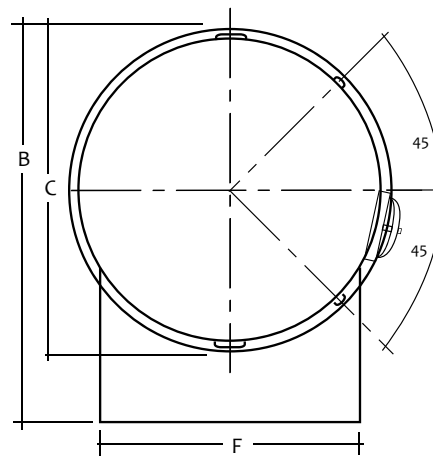
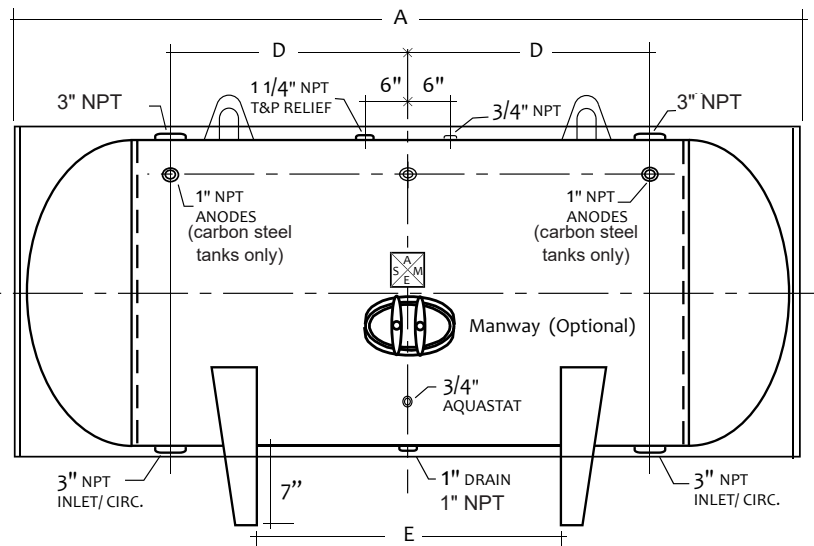
Code	ASME Sec IV HLW
Design Pressure	125 psi
Parts Warranty	One Year, Limited
Exterior	Heavy Ga. Steel Jacket
Insulation	2" High Density Foam w/12.5 R-Value
Supports	Saddles
Capacity	860 Gallons
Nominal Capacity	940 Gallons
Weight	2069 Lbs.

Dimensions

Callout	Value	Description
A	124"	Overall Length
B	59"	Overall Height
C	52"	Diameter
D	42"	Circulation
E	60"	Supports
F	42.1"	Support Width

Options

- ☐ 150 PSI Vessel
- ☐ Hand Hole
- ☐ Optional Fittings / Additional Notes:



Tank, Horizontal Jacketed

Design

- ☐ STHGJ Carbon Steel, Glass Lined
Five-Year Tank Limited Warranty
- ☐ STHDJ Carbon Steel, Double-Glass Lined
Ten-Year Tank Limited Warranty
- ☐ STHEJ Carbon Steel, Epoxy Lining
One-Year Tank Limited Warranty
- ☐ STH2J Duplex Stainless Steel
Twenty-Five-Year* Tank Limited Warranty
*See warranty sheet for details
- ☐ STH3J 316L Stainless Steel
Ten-Year Tank Limited Warranty

STHGJ48141 STH2J48141
STHDJ48141 STH3J48141
STHEJ48141



Submittal Data

Date:

Project #:

Engineer:

Prepared By:

Bid Date:

Project Name:

Location:

Contractor:

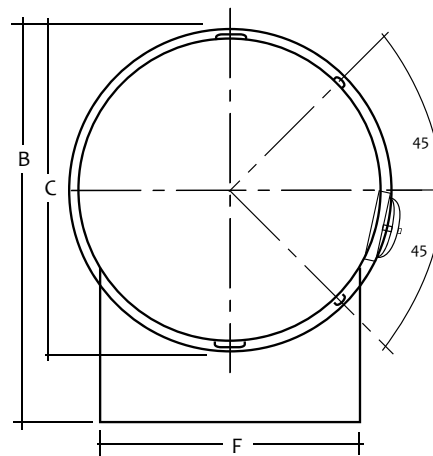
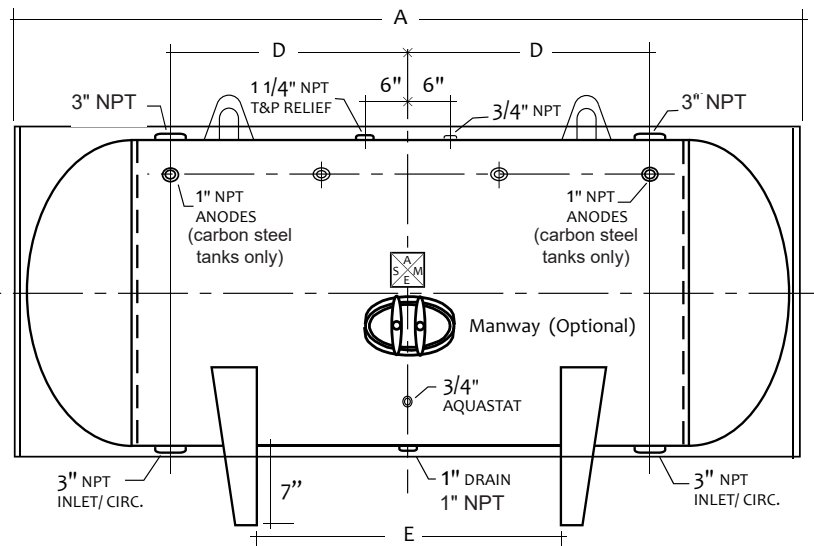
Code	ASME Sec IV HLW
Design Pressure	125 psi
Parts Warranty	One Year, Limited
Exterior	Heavy Ga. Steel Jacket
Insulation	2" High Density Foam w/12.5 R-Value
Supports	Saddles
Capacity	1040 Gallons
Nominal Capacity	1128 Gallons
Weight	2407 Lbs.

Dimensions

Callout	Value	Description
A	145"	Overall Length
B	59"	Overall Height
C	52"	Diameter
D	52.5"	Circulation
E	81"	Supports
F	42.1"	Support Width

Options

- ☐ 150 PSI Vessel
- ☐ Hand Hole
- ☐ Optional Fittings / Additional Notes:



Tank, Horizontal Jacketed

Design

- ☐ STHGJ Carbon Steel, Glass Lined
Five-Year Tank Limited Warranty
- ☐ STHDJ Carbon Steel, Double-Glass Lined
Ten-Year Tank Limited Warranty
- ☐ STHEJ Carbon Steel, Epoxy Lining
One-Year Tank Limited Warranty
- ☐ STH2J Duplex Stainless Steel
Twenty-Five-Year* Tank Limited Warranty
*See warranty sheet for details
- ☐ STH3J 316L Stainless Steel
Ten-Year Tank Limited Warranty

STHGJ54099 STH2J54099
STHDJ54099 STH3J54099
STHEJ54099



Submittal Data

Date:

Project #:

Engineer:

Prepared By:

Bid Date:

Project Name:

Location:

Contractor:

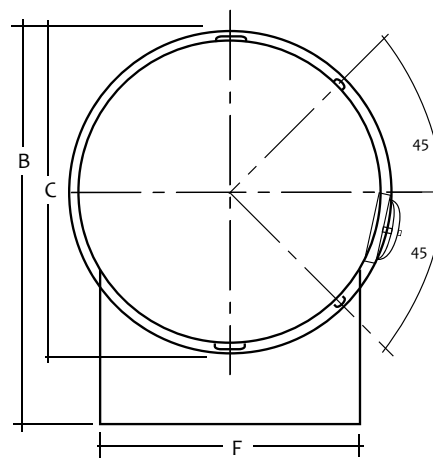
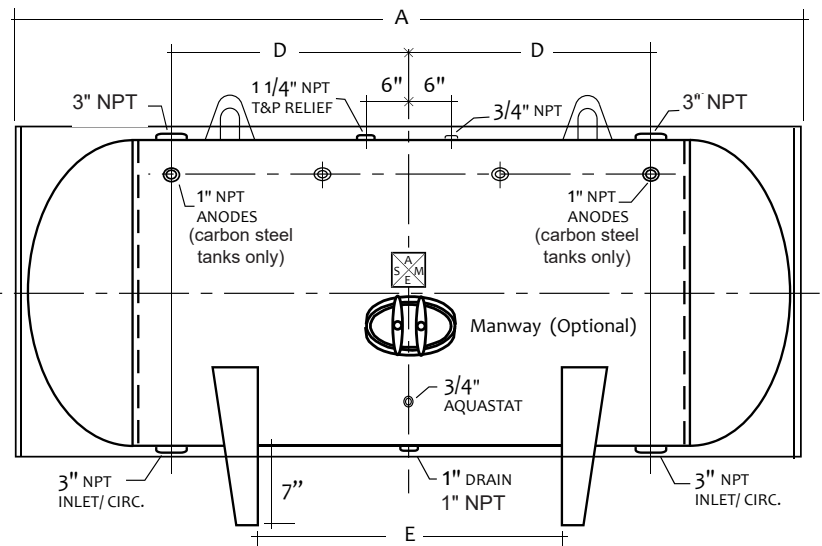
Code	ASME Sec IV HLW
Design Pressure	125 psi
Parts Warranty	One Year, Limited
Exterior	Heavy Ga. Steel Jacket
Insulation	2" High Density Foam w/12.5 R-Value
Supports	Saddles
Capacity	875 Gallons
Nominal Capacity	981 Gallons
Weight	2275 Lbs.

Dimensions

Callout	Value	Description
A	103"	Overall Length
B	65"	Overall Height
C	58"	Diameter
D	36"	Circulation
E	48"	Supports
F	47.3"	Support Width

Options

- ☐ 150 PSI Vessel
- ☐ Hand Hole
- ☐ Optional Fittings / Additional Notes:



Tank, Horizontal Jacketed

Design

- ☐ STHGJ Carbon Steel, Glass Lined
Five-Year Tank Limited Warranty
- ☐ STHDJ Carbon Steel, Double-Glass Lined
Ten-Year Tank Limited Warranty
- ☐ STHEJ Carbon Steel, Epoxy Lining
One-Year Tank Limited Warranty
- ☐ STH2J Duplex Stainless Steel
Twenty-Five-Year* Tank Limited Warranty
*See warranty sheet for details
- ☐ STH3J 316L Stainless Steel
Ten-Year Tank Limited Warranty

STHGJ54123

STH2J54123

STHDJ54123

STH3J54123

STHEJ54123



Date:

Project #:

Engineer:

Prepared By:

Bid Date:

Submittal Data

Project Name:

Location:

Contractor:

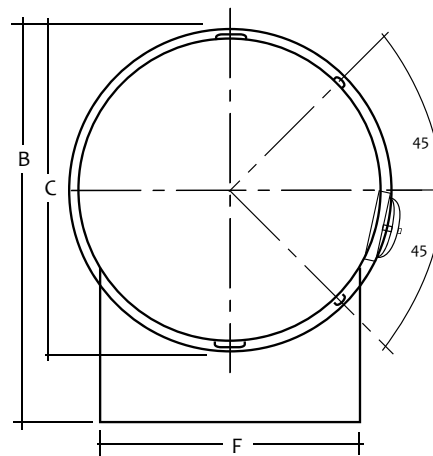
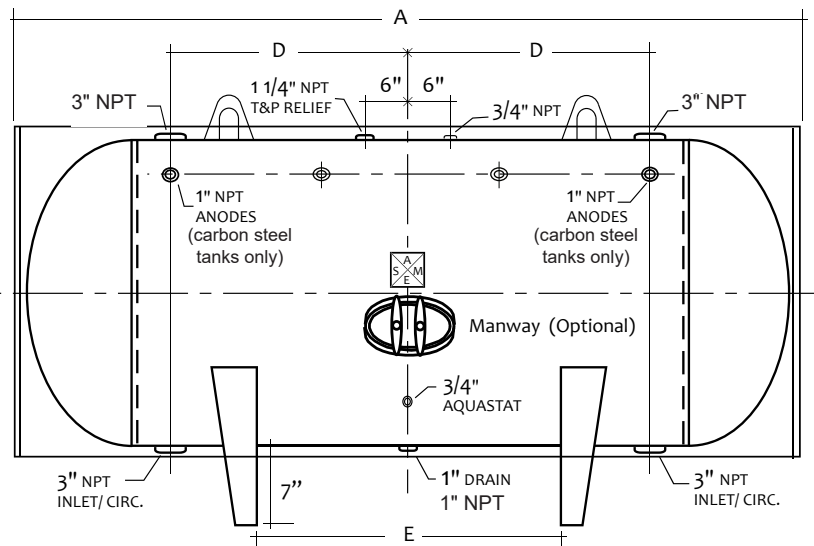
Code	ASME Sec IV HLW
Design Pressure	125 psi
Parts Warranty	One Year, Limited
Exterior	Heavy Ga. Steel Jacket
Insulation	2" High Density Foam w/12.5 R-Value
Supports	Saddles
Capacity	1110 Gallons
Nominal Capacity	1219 Gallons
Weight	2650 Lbs.

Dimensions

Callout	Value	Description
A	127"	Overall Length
B	65"	Overall Height
C	58"	Diameter
D	42"	Circulation
E	57.5"	Supports
F	47.3"	Support Width

Options

- ☐ 150 PSI Vessel
- ☐ Hand Hole
- ☐ Optional Fittings / Additional Notes:



Customer Service and Product Support: 800.900.9276 • Fax 800.559.1583
 Headquarters: 20 Industrial Way, Rochester, NH, USA 03867 • 603.335.6300 • Fax 603.335.3355
 9 Brigden Gate, Halton Hills, Ontario, Canada L7G 0A3 • 905.203.0600 • Fax 905.636.0666
www.Laars.com Litho in U.S.A. © Laars Heating Systems 20-09 Document 4224F

Tank, Horizontal Jacketed

Design

- ☐ STHGJ Carbon Steel, Glass Lined
Five-Year Tank Limited Warranty
- ☐ STHDJ Carbon Steel, Double-Glass Lined
Ten-Year Tank Limited Warranty
- ☐ STHEJ Carbon Steel, Epoxy Lining
One-Year Tank Limited Warranty
- ☐ STH2J Duplex Stainless Steel
Twenty-Five-Year* Tank Limited Warranty
*See warranty sheet for details
- ☐ STH3J 316L Stainless Steel
Ten-Year Tank Limited Warranty

STHGJ60096
STHDJ60096
STHEJ60096

STH2J60096
STH3J60096



Submittal Data

Date:

Project #:

Engineer:

Prepared By:

Bid Date:

Project Name:

Location:

Contractor:

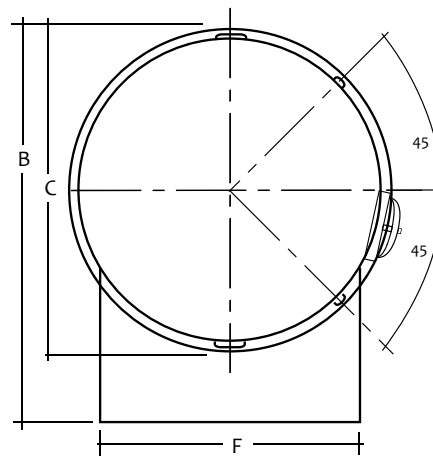
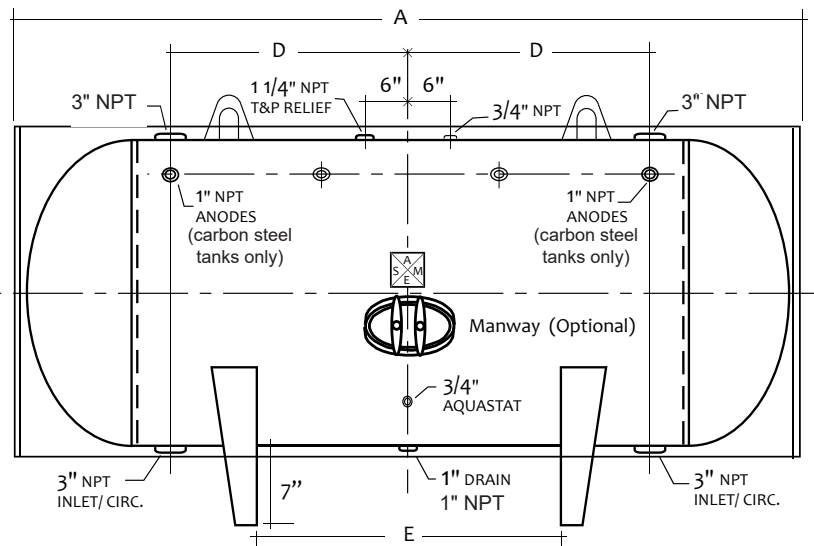
Code	ASME Sec IV HLW
Design Pressure	125 psi
Parts Warranty	One Year, Limited
Exterior	Heavy Ga. Steel Jacket
Insulation	2" High Density Foam w/12.5 R-Value
Supports	Saddles
Capacity	1000 Gallons
Nominal Capacity	1174 Gallons
Weight	2675 Lbs.

Dimensions

Callout	Value	Description
A	100"	Overall Length
B	71"	Overall Height
C	64"	Diameter
D	28.5"	Circulation
E	34"	Supports
F	52.5"	Support Width

Options

- ☐ 150 PSI Vessel
- ☐ Hand Hole
- ☐ Optional Fittings / Additional Notes:



Customer Service and Product Support: 800.900.9276 • Fax 800.559.1583
Headquarters: 20 Industrial Way, Rochester, NH, USA 03867 • 603.335.6300 • Fax 603.335.3355
9 Brigden Gate, Halton Hills, Ontario, Canada L7G 0A3 • 905.203.0600 • Fax 905.636.0666
www.Laars.com
Litho in U.S.A. © Laars Heating Systems 20-09 Document 4224F

Tank, Horizontal Jacketed

Design

- ☐ STHGJ Carbon Steel, Glass Lined
Five-Year Tank Limited Warranty
- ☐ STHDJ Carbon Steel, Double-Glass Lined
Ten-Year Tank Limited Warranty
- ☐ STHEJ Carbon Steel, Epoxy Lining
One-Year Tank Limited Warranty
- ☐ STH2J Duplex Stainless Steel
Twenty-Five-Year* Tank Limited Warranty
*See warranty sheet for details
- ☐ STH3J 316L Stainless Steel
Ten-Year Tank Limited Warranty

STHGJ60114

STHDJ60114

STHEJ60114

STH2J60114

STH3J60114



Submittal Data

Date:

Project #:

Engineer:

Prepared By:

Bid Date:

Project Name:

Location:

Contractor:

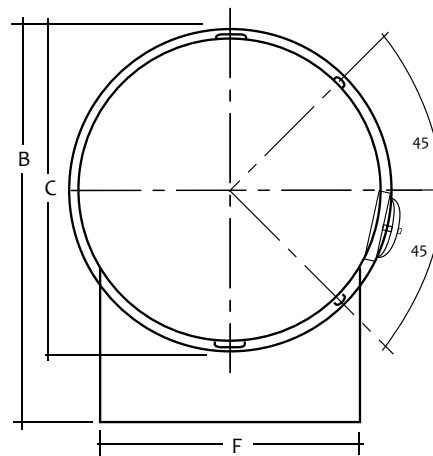
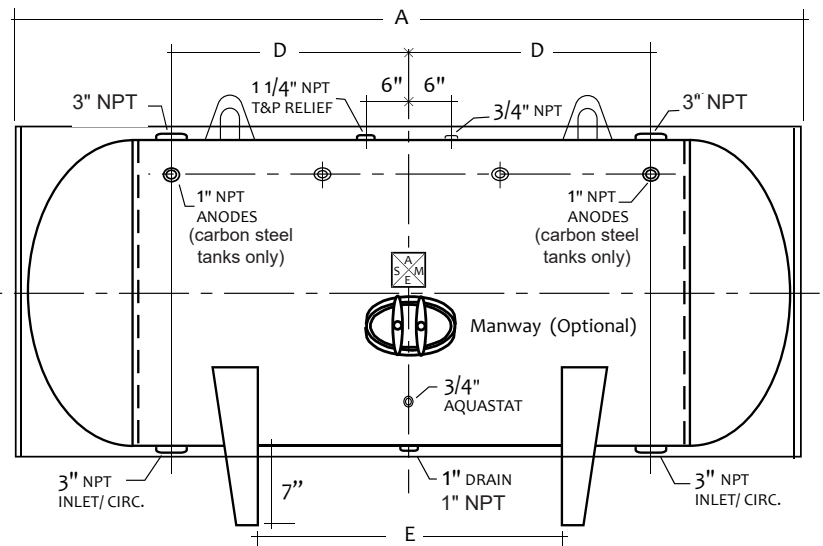
Code	ASME Sec IV HLW
Design Pressure	125 psi
Parts Warranty	One Year, Limited
Exterior	Heavy Ga. Steel Jacket
Insulation	2" High Density Foam w/12.5 R-Value
Supports	Saddles
Capacity	1245 Gallons
Nominal Capacity	1395 Gallons
Weight	3125 Lbs.

Dimensions

Callout	Value	Description
A	118"	Overall Length
B	71"	Overall Height
C	64"	Diameter
D	24"	Circulation
E	45.5"	Supports
F	52.5"	Support Width

Options

- ☐ 150 PSI Vessel
- ☐ Hand Hole
- ☐ Optional Fittings / Additional Notes:



Customer Service and Product Support: 800.900.9276 • Fax 800.559.1583
 Headquarters: 20 Industrial Way, Rochester, NH, USA 03867 • 603.335.6300 • Fax 603.335.3355
 9 Brigden Gate, Halton Hills, Ontario, Canada L7G 0A3 • 905.203.0600 • Fax 905.636.0666
www.Laars.com Litho in U.S.A. © Laars Heating Systems 20-09 Document 4224F

Tank, Horizontal Jacketed

Design

- ☐ STHGJ Carbon Steel, Glass Lined
Five-Year Tank Limited Warranty
- ☐ STHDJ Carbon Steel, Double-Glass Lined
Ten-Year Tank Limited Warranty
- ☐ STHEJ Carbon Steel, Epoxy Lining
One-Year Tank Limited Warranty
- ☐ STH2J Duplex Stainless Steel
Twenty-Five-Year* Tank Limited Warranty
*See warranty sheet for details
- ☐ STH3J 316L Stainless Steel
Ten-Year Tank Limited Warranty

STHGJ60138 STH2J60138
STHDJ60138 STH3J60138
STHEJ60138



Submittal Data

Date:

Project #:

Engineer:

Project Name:

Prepared By:

Location:

Bid Date:

Contractor:

Code	ASME Sec IV HLW
Design Pressure	125 psi
Parts Warranty	One Year, Limited
Exterior	Heavy Ga. Steel Jacket
Insulation	2" High Density Foam w/12.5 R-Value
Supports	Saddles
Capacity	1530 Gallons
Nominal Capacity	1689 Gallons
Weight	3575 Lbs.

Dimensions

Callout	Value	Description
A	142"	Overall Length
B	71"	Overall Height
C	64"	Diameter
D	48"	Circulation
E	69.5"	Supports
F	52.5"	Support Width

Options

- ☐ 150 PSI Vessel
- ☐ Hand Hole
- ☐ Optional Fittings / Additional Notes:

